

LILACS

VOLUME 20, NUMBER 1

WINTER 1991



FR. JOHN L. FIALA | *May 18, 1924-Dec. 20, 1990*

QUARTERLY JOURNAL

of the International Lilac Society

*IN THIS
ISSUE:* **Membership Directory**

A Publication of
THE INTERNATIONAL LILAC SOCIETY

Copyright 1991 Editor

Copies of this publication are available by writing to the International Lilac Society, c/o Mrs. Pauline Fiala, 6995 Congress Road, Spencer, Ohio 44275. \$5.00 (U.S.)

International Lilac Society

President	<i>Daniel K. Ryniec</i> Brooklyn Botanic Garden 1000 Washington Ave., Brooklyn, NY 11225
Executive Vice President	<i>William A. Utley</i> Grape Hill Gardens, 1232 Devereaux Rd., Clyde, NY 14433
Secretary	<i>Walter W. Oakes*</i> Box 315, Rumford, Maine 04276
Treasurer	<i>Walter E. Eickhorst</i> 140 West Douglas Ave., (2-C) Naperville, IL 60540
Editor	<i>Robert B. Clark</i> RD 1, Box 1344, Cattle Landing Road, Meredith, NH 03253 (Apr.-Nov.) 27 Lake Wood Cir., Meadow Wood Farms, Ocala, Fla. 32675 (Dec.-Mar.)

Membership Classification (U.S. Funds)

Single or Family / Annual	\$ 15.00
Sustaining	30.00
Institution/Commercial	35.00
Life	150.00

**Mail membership dues to I.L.S. Secretary*

INTERNATIONAL LILAC SOCIETY is a non-profit corporation comprised of individuals who share a particular interest, appreciation and fondness for lilacs. Through exchange of knowledge, experience and facts gained by members it is helping to promote, educate and broaden public understanding and awareness.

Published January, 1991

|||||

|||||

IN MEMORIAM

|||||

FOLLOWING A PROLONGED ILLNESS of many afflictions and constant pain, our beloved Father John Leo Fiala succumbed on Dec. 20, 1990, at his home in Meadow Wood Farms, Ocala, Florida, in his sixty-seventh year. He was surrounded by a loyal extended family and devoted friends.

Since coming to Florida in 1982, he served as assistant to the pastor of Our Lady of the Springs Roman Catholic Church where like Job he replaced the circle of faithful friends he was obliged to leave behind in the Cleveland diocese with an equally devoted family in Ocala. Fr. Fiala's impact on the several communities, religious, educational, and horticultural, will prove enduring. He was both lovable and loving, a model of what a Christian's life should be.

While yet a lad, John began his horticultural career by sowing and tending his Aunt Marie's flower garden at Gladwin, Michigan, during his summer vacations from school. At ten years of age he persuaded his father to let him set out an apple orchard. At the same time he planted a vineyard to produce grapes in variety while the appletrees were coming into bearing. Some forty years ago, in studying biological laws of inheritance, he turned to breeding daylilies. This was the time when polyploidy was being developed. He worked out the technique for lilacs, naming one of his first seedlings 'Aloise' in honor of his mother. In 1974 the Massachusetts Horticultural Society awarded its Thomas Roland medal to him in recognition of his plant breeding accomplishments.

Fr. Fiala was a founding member of I.L.S., a society held together in large measure owing to his vision and devoted service. He gave unstintingly of himself in its early years, inspiring and encouraging its leaders and members. A grateful Society bestowed its highest honors upon him. He was the first editor of *LILACS*. He served several terms on the Board of Directors and on several committees.

The Christian's hope is in resurrection. Fr. Fiala developed this theme a year ago in his eulogy of Charles Fuller, his personal physician's late father, when he likened man's passage into death to the infant's entrance into this world at birth. The baby for nine months has been inhabiting a warm, dark, watery world. In the fullness of time it must pass into a strange and seemingly hostile environment. No wonder its reaction is a wowl. Who could blame this innocent, helpless child for having to yield comfort and safety for such uncertainties?

Likewise man faces the transition, called death, into the life everlasting

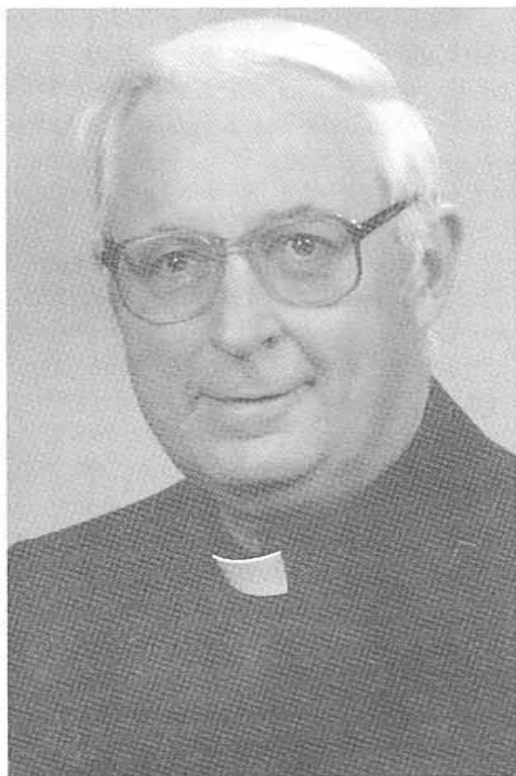
with a touch of fear and apprehension. Fr. John leaves us the richer for having been with and among us these many blessed years; he now enters his Father's house assured that he will forever dwell in Jesus' presence.

"I am indeed going to prepare a place for you, and then I shall come back to take you with me, that where I am you also may be."

JOHN 14:3

REQUIESCAT IN PACE

**Fr. John L.
Fiala**



|||||
**HOMILY
FOR
FATHER
JOHN L.
FIALA**

|||||
By Fr. Virgil Powers

We mourn at the death of Father John. A final departure is always sad and sorrowful . . . and more so when the person who leaves us is a dear and beloved friend. But we also rejoice that Father John's pilgrimage has come to an end. For him it was no easy pilgrimage . . . it was a pilgrimage of intense pain and suffering for many long years. We rejoice that his illness is now terminated, that he has fought the good fight, that he has kept the Faith, that he has gained the crown that was promised to a good and faithful servant.

I have known Father Fiala for almost five years, long enough and well enough to value and appreciate a very special priest, and a man of unique

character and exceptional ability.

First and above all else John Fiala was a Priest of God.

Every vocation is a special grace from God. The Lord very quietly drops a tiny seed into the heart of a young man, and just as quietly, the seed grows and matures. But the soil must be fertile, and the environment must be suitable. We can judge how fertile that soil was and how suitable was that environment that nourished the seed of young John's vocation. He was blessed to grow up in a home that was strong and vibrant in its Faith, and rich in the love of God.

Our Blessed Lord, once standing on the pulpit of a Galilean hillside, addressed His Apostles, and over their shoulders their successors, the priests of the Church until the end of time. He said, "You are the light of the world. Let your light shine before men." Someone has compared a priest to a lighthouse. He is the lighthouse of God, whose beams shine out over the waters of the world as a warning and a guide.

A priest is like a lighthouse in its foundation. The foundation must be strong and deep, else the lighthouse itself might be swept into the sea. A priest's foundation is set in a long course of intense study, but more important, in his character formation through strict discipline, iron self-control and solid piety.

A priest is like a lighthouse, too, because his is a lonely life. You do not find a lighthouse amidst other houses. It must stand apart. It must leave the rest, in order to serve the rest. And so with the priest. If he is to be a guide and a help to other men, he must leave home, family and friends, and live like a lighthouse, guiding and directing storm-tossed souls on the treacherous sea of life.

The life of a priest is like a lighthouse, also, because so often he is misunderstood and unappreciated. Yachts with wild parties aboard go skimming past the lighthouse. Some of those aboard look up at the austere surroundings of the lighthouse. They think it is missing all the fun of life . . . "the wine, women and song." But let a storm break, and the wild waves roar, then every eye strains for the lighthouse beam, and every ear listens for the lighthouse bell, and every rudder steers by the lighthouse course.

Isn't that the way it is, too, in the life of a priest? People do not usually come to a priest when things are merry and bright. But when some crisis, some sorrow, throws its chilling shadow over someone or some family, or when things are dark and dismal, then people turn to the priest and are glad that his light hangs high above the world's tide. John Fiala was God's lighthouse, whose light shone before all who knew and loved him!

Father John was a light to many people in many and various ways. He was a light to others by his keen intelligence, his wide-ranging talents, and his outstanding abilities. Especially, he was a guiding light to people by his

life of prayer and solid piety. But his piety was never ostentatious, or openly displayed. It was hidden behind his unending moments of illness, pain and suffering. As long as I have known him, he has needed the help of a cane in order to walk. Even though he had to be helped up and down these sanctuary steps, he never gave up saying Mass. For the past five or six years, he suffered from cancer which ravaged his entire body. His doctors could never understand how he lived so long. A most wonderful thing about Father John was that he never really complained about his afflictions. He suffered with absolute patience, resignation, and submission to the will of God. True, once he did admit to his former Archbishop, now Cardinal, James Hickey of Washington, D.C., that at times his pain was unbearable. And yet, Father John heroically endured these sufferings and offered all his pain to Almighty God in reparation for the crime of abortion throughout the world.

Whenever I asked Father John how he felt, he just answered "Hanging in there." I visited him about a month ago, and he told me that he hoped to be in Heaven by Christmas. He got his wish . . . he has gone home for Christmas!

The last time I saw him it was in the hospital a few days before he died. He asked me for my blessing. But somehow I felt much like John the Baptist upon meeting Christ . . . "Lord, I am not worthy." You should give me your blessing.

HOLY-INN

Prayer for the Adoption of the Unborn Holy Innocents of Abortion

Heavenly Father long ago the Holy Infants of Bethlehem gave their lives to protect the Divine Christ Child in their midst. I pray for the countless holy innocents of today whose lives are taken by abortion through selfishness, indifference and ignorance. I offer my sufferings, the anxieties and tensions of my life in reparation for those who have taken the lives of these holy innocents, and pray to be worthy to adopt these unborn infants each day, as my own spiritual children, so that I may plead for them the baptism of desire in Jesus, "In the name of the Father, and of the Son and of the Holy Spirit." May they find eternal joy with Jesus, Our Redeemer, in the fullness of eternal life with You, who created them through the instrumentality of human parents . . . God of mercy, God of compassion, grant me this grace to plead in their name and adopt these infants spiritually as my own. This I ask through Jesus Christ, Your Divine Son. Amen.

Prayer composed by Fr. John L. Fiala asking all to become members of the Apostolate of the Holy Innocents by reciting this prayer daily.

Olan Mills © 1990

IN MEMORIAM

Dr. Donald Egolf



WITHIN THE BRIEF SPAN of two weeks last month, I.L.S. lost two giants. Dr. Donald Egolf lost his life in a one-car accident near his home on December 7, 1990, at age 62. (Fr. Fiala died on December 20th) Both were prominent horticulturists and plant breeders, each receiving recognition from I.L.S. and the Massachusetts Horticultural Society for their outstanding contributions to American horticulture.

Donald Roy Egolf was born at Osterbury, Bedford County, PA, August 27, 1928, one of four sons to James and Mary (Hull) Egolf. He graduated from Pennsylvania State University and Cornell University, earning a Ph.D. in plant breeding at the latter institution in 1956. He won a Fulbright Scholarship to the University of London, 1956-58, after which he was appointed to the staff of the National Arboretum where he headed research

programs in cytogenetics, breeding and evaluation of ornamental plants. Among the fifty-seven cultivars to his credit are 18 viburnum, 26 crape myrtles or "summer lilacs," 6 firethorns, 5 hibiscus and 2 crab apples.

Since the common lilac does not grow well in the mid-Atlantic states too close to the coast, he had once began working with the early Chinese species, *Syringa oblata*, but his seedlings were lost when he was unable personally to supervise their care a few years ago when he was afflicted with Lyme Disease.

Don was quiet and unassuming. he did not have to brag about his accomplishments over these thirty-two years. He was a true plantsman with keen perception and superb skills. American horticulture, the Agricultural Research Service and I.L.S. have lost an admired and talented horticulturist and plant breeder.

I.L.S. extends its collective sympathy to his family, especially to his three children, Paul, Arthur and Margaret who lost their mother Sara in 1989. The family requests that sympathy be expressed as a memorial gift to All Saints Fund, St. Barnabas Episcopal Church, 14111 Oak Grove Road, Upper Marlboro, MD 20772.

////////////////////////////////////
PRESIDENT'S MESSAGE
////////////////////////////////////

A S WE PREPARE to celebrate the Holidays with our families and friends may I extend my warmest wishes to each of you for the New Year. May we all have good health, much laughter, and Peace.

We are all aware that with each passing year we lose someone who has been instrumental in the promotion of the Lilacs we all adore. Much of the work which these individuals have compiled over a lifetime could be forgotten. Today, you have the opportunity to help preserve these most important contributions by making your contribution to the I.L.S. Your contribution will help establish adequate funds to properly preserve the Archives. In addition, your contribution will support Scientific Research and help us continue our participation in Educational Expositions.

Now is the time to support this organization. So as I write out my check to the INTERNATIONAL LILAC SOCIETY for my renewal and gift memberships I will include my contribution towards matching the \$20,000.00 which is presently held in special accounts. I would hope that each of you consider making an additional contribution to I.L.S. so we will be able to adequately endow our Archives, Research, and Education programs. Let us all, in this our 20th year, make a contribution for the LILACS in all its glory for future generations.

Thank you,
Daniel Ryniec

LILACDOM NEWS

Hundreds Visit I.L.S. Exhibit Daily

W. SPRINGFIELD, MASS. — The Eastern States Exposition last September attracted 960,000 visitors to the agricultural and home industries fair of New England and northeastern states. Last September 15th through 23rd the I.L.S. through its Education Committee headed by Dr. Owen M. Rogers of Durham NH, set up a ten by ten foot exhibit which featured a triptych of enlarged lilac flowers flanking an International Lilac Society poster on a table displaying Lilac Society literature. The attention grabbers on the side walls were reconstructed dormant lilac shrubs in various stages of neglect and corrective pruning.

Society volunteers included Bob and Sabra Gilbert of Hyde Park NY, Orville and Ellen Steward of Plymouth VT, John and Ann Carvill of Latham NY, Peter Ely of Seymour CT, and Robert Clark of Meredith NH.

Hundreds of lilac lovers visited the exhibit each day showing that interest in lilacs is universal and continuous. Questions most often asked were on failure to bloom, the white stuff on lilac leaves at that season, when to prune (meaning, is deadheading necessary?), and transplanting of suckers. One visitor asked only for a coded membership application blank.

WHAT IS AMERI FLORA '92?

AmeriFlora '92 is the International Floral & Garden Festival which is being planned to commemorate the Quincentennial, the 500th anniversary of Christopher Columbus' first voyage to the Americas. This festival has been sanctioned as an official project of the U.S. Christopher Columbus Quincentenary Jubilee Commission. The Commission describes AmeriFlora '92 as the "centerpiece attraction of the nation's 1992 festivities." AmeriFlora '92 also carries sanctioning as a Class A event by the International Association of Horticulture Producers, the first such sanctioning of an event in this country.

Who Will Participate in AmeriFlora 1992?

The Grand International Floral Exposition indoor show, which runs from April 3-19, 1992, will be limited to international exhibitors. We expect representatives from 20-30 countries to install gardens showcasing their finest horticultural products and garden designs. The outdoor Floral and Garden Festival, which runs from April 20-October 12, 1992, will feature exhibits from international participants, individual states and U.S. regions, amateur and professional horticultural societies, amateur and professional landscape organizations, corporate sponsors, civic organizations and commercial horticulture firms.

Successful Garden Club Lilac Project

RANDOLPH, VT. Last spring the beautification committee of the Randolph GC proposed promoting lilacs throughout the community. Upfront money was appropriated sufficient to order twenty-nine 2 to 3 foot lilacs in assorted cultivar such as 'Charles Joly', 'Mme. Lemoine' and 'President Grevy', from a Swanton nurseryman. Delivery was to be made in time for the Club's annual plant sale in May. An advertisement offering free lilacs by a clip-out blank was placed in the local weekly newspaper. Entries were to be returned by a certain date when drawings were to be made. Winners were notified by postcard and were advised to pick up their prize lilacs at the plant sale.

So successful was the project that it will be repeated this spring when Vermont celebrates its bicentennial. -- Nancy H. Simpson, Randolph GC



Orville M. Steward (right) presents John Coolidge with Mrs. Calvin Coolidge lilac at Plymouth, VT. Looking on are Robert B. Clark (left) and Melvin O. Baker (back).

ASK DR. LILAC . . .

Heat Tolerant Lilacs and Grafts

HERE IN ATLANTA, GA., home of Rhett and Scarlet, I am trying to grow hybrid lilacs that are more heat tolerant.

One hybrid variety which I believe is 'Ester Staley', does very well. 'Lamartine' has been reported doing well in North Carolina. I have grafted 'Excel' from Southern California on privet. It is very virogous but has not yet bloomed. If any members that can make suggestions on heat resistant varieties, they would be much appreciated.

I understand Ash is a better understock for lilac, but privet is such a wild pest here I make use of the understock. *S. sweginzowii* is another vigorous lilac member but the flowers smell more like privet.

LETTERS...

Japanese Pictogram

国際ライラック協会 御中

前略

貴会への入会を希望しておりますので
至急、関係資料を送っていただきたく
お願い致します。 草々

Translation

To the International Lilac Society:

I would very much like to become a member of your honorable society.
Would you please send the appropriate materials to become a member.

August 17, 1990

Ms. Ryuko Iwasaki

植 物 園 BOTANIC GARDEN

ライラック並木 (5月-6月)

北海道大学農学部附属植物園

THE BOTANIC GARDEN
FACULTY OF AGRICULTURE
HOKKAIDO UNIVERSITY

札幌市中央区北3条西8丁目

Phone (011)221-0066

(More Pictures
on Page 28)



Margaretten Park Open House

To the editor:

Margaretten Park held open house April 7 and 8, 1990. Because of the early heat spell the date was set a week before the normal lilac time. The temperature dropped enough after that Saturday and Sunday to prolong the lilac bloom another three weeks so that those who missed the first period saw *S. hyacithiflora*, early and late *vulgaris*, the prestonian and tree lilacs. Even the Tamarix bordering the park for one half mile made an excellent showing. We have had a three year drought going into the fourth, but you wouldn't know it except for the drop in volume of the wells and springs that feed them. There were 2800 registrants — double that for the number of people actually attending. The eight docents were kept busy escorting the groups, lecturing as they, go through the rows of lilacs, answering questions, pointing out features, differences and special characteristics of the many cultivars in bloom. You can imagine the "oohs" and ahs." It was quite a sight to see and smell.

The last seminar of the season was held in Philomath, Oregon, where four state garden clubs got together in the grange hall to listen to a three hour lecture and slide show on lilacs. The hall was crowded with a very attentive audience, showing their interest, especially during the question and answer period which lasted another hour. Following the seminar we all walked over to the gardens of Mrs. Helen Shroyer, the hostess of the meeting, where we enjoyed viewing one of the most extensive collections of plants I have ever seen in a private arboretum. Mrs. Shroyer has been landscaping and planting at her 8 acre estate near Eugene, Oregon since 1945. In her late eighties, she is a very energetic, knowledgeable and gracious hostess — a grand lady and expert horticulturist. Her husband, children and friends all pitched in to make my stay in Oregon a pleasant one.

/s/ Joel Margaretten



Sue Ferguson, Regina Campbell, William Utley in conversation.

COMMITTEE REPORTS

Distribution Committee Report

The Propagation & Distribution Committee is proud to announce a program to distribute new and extraordinary varieties of lilacs to members of the International Lilac Society. After several abortive attempts because of lack of facilities both for propagation and shipping, the Board decided at the fall meeting to accept Congdon & Weller's offer to help with the project.

The committee does not wish to compete with commercial nurseries in any way. This will be an I.L.S. project. We will try to distribute new or unusually fine older varieties and species not available from other sources.

It will take several years to get an adequate number of plants of new varieties into the pipe line. Consequently the first two years we are planning to make available from material received from The Royal Botanical Gardens at Hamilton, plants recommended by Charles Holetich that Congdon & Weller already have in propagation; plants that hopefully might be of interest to members of I.L.S.

This is especially important for the members who are not fortunate enough to attend the conventions, therefore, do not have the advantage of getting plants at the auctions. The Board has felt for some time that we have been neglecting these members.

Order blanks will be sent out with the summer issue of the Quarterly and plants will be sent in September. The plants featured this year will be Krasavitsa Moskvyy, Esther Staley and Primrose. There are also a few plants of Miss Kim, Nadezhda and Andenken an Ludwig Spaeth that will be available on a first-come first-serve basis. Plants will sell for \$21.95 (U.S. currency) apiece. This will cover the cost of the plants, shipping and handling and some for I.L.S. to continue the program.

Respectfully Submitted
/s/ William A. Utley, Chair

Nominations Committee Report

This year is the middle year in which the Board of Directors membership is being reduced from 24 to 15. Consequently *only* five names were entered on the ballot. Much consideration was given to balance according to geography, gender, talent and age (!). Many prospective candidates' names were submitted to the Committee. After much correspondence, the slate was submitted to the Elections Committee. *Respectfully submitted,*

/s/ Robert B. Clark, Chairman

Education Committee Report

The International Lilac Society will have a 10'x10' booth in the New England Building at the Eastern States Exposition from September 12th to the 23rd, 1990. The exhibit will use a hinged 3-part background on a table. The Society's name will fill the center background panel and the RBG color lilac posters will be used on the side panels. Additional 11"x14" color pictures of lilacs will be used on the draping on the back of the booth, if possible. Beside the table we will "construct" a dormant lilac clump that can serve as an exhibit on pruning. Society membership material will be available on the table. The exhibit is designed to be manned during the show — the show officials expect this — but it will also be self-explanatory so it can stand as a static exhibit during unmanned periods.

Owen Rogers will set up the exhibit on September 12th and stay with it through the 15th. He will also take down the exhibit on September 23rd. Volunteers to man the booth from Sunday, September 17th, through Saturday, September 22, will be needed and Owen Rogers will be soliciting for such people at the convention.

*Respectfully submitted,
/s/ Owen M. Rogers*

Publications Committee Report

The change from monthly to quarterly publication of the Society's main publication has been accepted with only one or two comments in favor of more frequent publication. We have not done a cost analysis and will rely on the Treasurer's Report and advice in this area. The Editor's Report will be presented to the Board as a separate report. The Publications Committee supports the editor's request for a business manager. There are only two ways to lower costs. One is to reduce expenses and the other is to increase income. A business manager could address both ends of this equation.

One publication idea has been passed on to the editor. It would involve including a full description of one lilac cultivar (possibly with a color photo on the cover) in each issue. This is basically an economic consideration and another instance where a business manager's advice would be helpful.

*Respectfully submitted,
/s/ Owen M. Rogers*

Research Committee Report

The newly formed Research Committee of the International Lilac Society consists of: Craig Hibben, Chairman; Louis Erickson, Freek Vrugtman, Ed Hasselkus, Trevor Cole, Jack Alexander, and Woody Barnes. The following proposals from the Committee were accepted by the Board of Directors for implementation. (1) Enlarge the current research endowment fund (\$1,000) by seeking support from membership, the nursery industry, and other outside sources. (2) Use income from the fund to provide competitive grants for research on lilacs. (3) Cooperate with the Horticultural Research Institute, Washington, D.C., in publicizing and administering the grants. (4) Encourage publication in the Quarterly Journal of scientific, refereed papers, as well as short (100-200 words) research notes and observations. (5) Devote one session at annual meetings to short (10-15 minutes) oral presentations of research findings. Abstracts of papers could be published in the Quarterly Journal.

*Respectfully submitted,
/s/ Craig R. Hibben*

Archives Committee Report

The primary concern is personal papers and records, as well as organizational papers (i.e., minutes, committee reports). What and why might a historian in the twenty-first century want to know about the founding of I.L.S., the early years and the people who were active participants? What plans have you made for preserving your papers for future historians?

The archives which were transferred from Falconskeape to Grape Hill Gardens in Clyde, N.Y. consisted only of musty, slightly damp and woefully incomplete I.L.S. publications, plus a few miscellaneous non-serial publications.

William Utley is in possession of a complete set of minutes from 1972, but this does not include all committee reports.

The committee recommends that there be at least three (3) sets of all published materials, minutes, committee reports and all pertinent materials. If there is to be more than one repository for the archives, then there must be complete cooperation and exchange.

The committee suggests a budget for 1990-91 of \$500 to cover the cost of file cabinets and duplicating of materials.

*Respectfully submitted,
/s/ Lois Utley, Chair*

Membership Committee Report

All membership records received from C. Holetich at last year's annual meeting in Medina, Ohio, were put on a computer file as of August 20, 1989.

Alphabetical directories were produced, reduced to 8½x11, xeroxed, and mailed to various officials of the ILS throughout the year. Several directories arranged by zip code, as well as several lists of Canadian and foreign members, were furnished to interested officials. Copies of "overdue lists" were produced on 8/20/89 and again on 1/20/90 and sent to all Regional Vice Presidents for follow-up.

As of 5/16/90 the membership statistics are as follows:

New members	97	Terminated	6 (1-13 yrs.)	
Re-instated	3	Deceased	1 (Lourene Wishart)	
Complimentary	2	Change to Life	4	

TOTAL MEMBERSHIP 494 (2 double listings: R. Klehm and L. Utley)

Canadian members 57

Foreign members 17

Australia 1	Germany 2	Poland 1
-----------------------	---------------------	--------------------

Austria 1	Hungary 2	Sweden 1
---------------------	---------------------	--------------------

Czechoslovakia 1	Netherlands 1	USSR 3
----------------------------	-------------------------	------------------

England 2	Norway 1	Yugoslavia 1
---------------------	--------------------	------------------------

A transfer of records and the setting up of new computer records is bound to create difficulties. Walter Oakes and Charles Holetich's prompt and efficient cooperation in clarifying discrepancies and resolving problems is gratefully acknowledged.

*Respectfully submitted,
/s/ Winfried K. Martin*



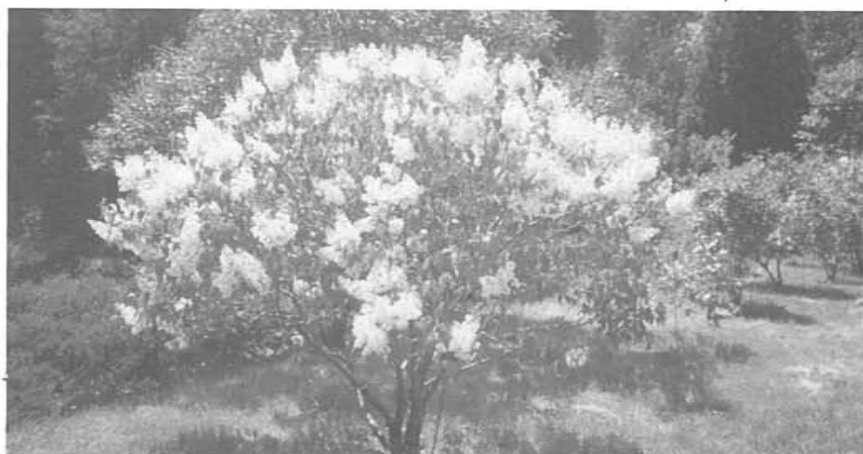
Planting ceremony at Morgan Arboretum. Pauline Fiala, Dan Ryniec, Col. Hanssen Schanker and Francesco Tortorici watch an unidentified man plant a *Syr. X chinensis* (Rouen lilac).

Gifts and Endowments Committee Report

ILS as an educational not-for-profit institution welcomes gifts and bequests in order to fulfill its teaching and research functions concerning lilacs and their various aspects of culture and enjoyment. Established are three funds in memory of early members and lilac devotees: Clarence C. Clark, John C. Wister and Hans Conreid. The earnings from these bequests are being used to meet hitherto unbudgeted expenses of special projects which further the Society's primary objectives.

Members and friends are encouraged to make contributions as memorials, or as merely tax deductible gifts, payable to Treasurer, International Lilac Society, Inc.

*Respectfully submitted,
/s/ Robert B. Clark, Chairman*



植 物 園 BOTANIC GARDEN

Hokkaido University Botanic Garden



Lilac Registration 1989²

By Freek Vrugtman¹

Royal Botanical Gardens, Box 399, Hamilton, Ontario L8N 3H8, Canada

All correspondence concerned with additional information or plant or propagation material of newly registered cultivars should be directed to the various registrants listed below, not to the Royal Botanical Gardens. Previous registrations lists of *Syringa* appeared in AABGA Bul. 13(4): 105-110; 14(3):95; 15(3):71-72; 16(4): 131-132; 17(3):67-69; 18(3):87; HortScience 23(3):458 and 24(3):435-436.

***Syringa josikaea* Jacq.f. ex Reichb. 'Emerald', Schmidt.** Registered 28 June 1989. Registrant: G. Schmidt, Buda Arboretum, Univ. of Horticulture, Villanyi ut 35-43, 118 Budapest, Hungary. Selected by Dr. Gabor Schmidt in 1980 from seedlings grown from *S. josikaea* seed received from Boskoop, the Netherlands, about 1972. Original plant first flowered about 1978. Not yet introduced into the trade. Medium-size shrub (1.7 to 2.2 m tall), habit compact and ovate (egg-shaped). Foliage color (Horticultural Colour Chart 1939/41 R.H.S.): Emerald Green 758, or (R.H.S. Colour Chart 1966): 134.A. Flowers more abundant and of a darker lilac-pink than those of *S. josikaea*, as it is commonly known in cultivation. Florets single; open floret color (H.C.C.): Lilac Purple 031/1, or (R.H.S. C.C.): 70.B (floret color similar to lilac 'Andenken an Ludwig Spath'). Flowers slightly scented. Hardy in Arnold Arboretum Hardiness Zone 5. Thrives in rich loamy soils, pH 6 to 8.5. Tolerant of polluted air and medium drought.

***Syringa protolaciniata* P.Green & M.-C.Chang 'Kabul'.** Registered 11 Oct. 1989. Registrant: Peter S. Green, Royal Botanic Gardens, Kew, Richmond, Surrey TW9 3AB, England. Introduced from gardens in Kabul, Afghanistan, a number of years ago and grown under the misapplied name *S. afghanica*. The name *S. protolaciniata* 'Kabul' has been validly published in Kew Magazine 6(3):116-124 & Pl.132 (Aug. 1989). The corolla lobes are longer, and therefore narrower in proportion to their length, being (6-) 7- to 9-mm long and 3- to 4-mm broad, as opposed to 5 to 7 by 3 to 4 mm in the plants descended from the original Chinese introduction of *S. protolaciniata*, which was grown under the misapplied name *S. laciniata* auct. Known to be hardy in the Arnold Arboretum; Arnold Arboretum Hardiness Zone 3.

CORRIGENDUM

***Syringa vulgaris* L. 'Tadeusz Kósciuszko', Karpow-Lipski 1958.** The cultivar name 'Tadeusz Kósciuszko' was validly published in Arboretum Kórnickie 3:105 & 108 (1958). In *Arnoldia* 31(3):126 (1971) appears the erroneous entry: "D VI Tadeiszko — Karpow. 1954."; the corrected entry should read: "D IV Tadeusz Kósciuszko — Karpow-Lipski. 1958." (IV = lilac; VI = magenta; D = double flowers.)

¹Registrar for *Syringa*. Contribution No. 70, Royal Botanical Gardens, Hamilton, Ont., Can.

²Reprinted from HortScience, Vol. 25(6), June 1990.

ILS Central Region Report

The Central Region is honored to include the site of the 1991 Annual Meeting at Lilacia Park, Lombard, Illinois, next May 9th-11th. It is hoped ILS members will donate lilacs and related lilac items for the auction to Lombard Park District, 150 South Park, Lombard, Illinois, 60148.

My mother and ILS member Mrs. Jane J. Horman of St. Clair Shores, MI, has donated a substantial sum toward the establishment of a lilac garden in memory of her late husband, my father, Elmer A. Horman for Detroit's beautiful Belle Isle Park. We are certain the City of Detroit and the Belle Isle Botanical Society will welcome this gift and create a fine lilac garden for future public pleasure and education.

With great spirit and effort, ILS member Mrs. F.N. Davies of Bloomfield Hills, MI, has developed a very fine lilac collection and is planning to add to that beautiful garden!

The University of Michigan is in the process of restoring its lilac collection. The late Edward A. Upton supplied many of the original plants. U of M graduate students Mr. David Stevenson and Mr. Douglas Pearsall selected several plants (lilacs) from our collection for the restoration project. Because of the generosity and encouragement given to me over many years by several ILS boosters (members), I enjoy sharing lilacs whenever possible.

I am pleased to mention that Mr. Charles Lamprecht, who has a special fondness for lilacs, has kindly volunteered to serve as our new Central Region Vice President. I have benefitted by having had that responsibility and I promise to continue to help our Society achieve its goals. Please join me in wishing Charles "smooth sailing" and thanks. His address is 1007 Edgewater, Sandusky, Ohio, 44870 (USA).

*Respectfully submitted,
/s/ William H. Horman*



Orville Steward, Jim Gage and Bob Clark

The Lilac Farm

P.O. Box 52
Cambridge Springs, PA 16403
(814) 398-2728

Variety Availability Chart

NAME	DESCRIPTION	\$4.00	\$6.00	\$8.00	\$10.00	\$12.00	\$15.00	Higher
Adelaide Dunbar, D-VII	Double-Purple (Very Dark)	X						
Anabel, D-V	Double-Pinkish	X						
Belle De Nancy, D-V	Double-Pinkish With White		X		X	X	X	X
Charles Joly, D-VII	Double-Reddish Purple	X			X	X	X	X
Charles X, S-VI	Single-Magenta	X	X		X	X	X	X
Clyde Heard, S-VI	Single-Magenta	X						
Congo, S-VI	Single-Magenta	X		X				
Hulda, S-VII	Single-Purple	X						
Katherine Havemeyer, D-V	Double-Pink (Large Flower)	X	X		X	X	X	X
Ludwig Spaeth, S-VII	Single-Purple	X		X				
Miss Canada, S-V	Single-Pink				Available, Fall 1991	X	X	
Miss Ellen Willmott, D-I	Double-White	X						
Miss Kim, S-II	Single-Violet (Korean)	X						
Mme. Lemoine, D-I	Double-White	X	X					
Monge, S-VII	Single-Purple	X	X					
Mt. Baker, S-I	Single-White	X						
Paul Thirion, D-VI	Double-Magenta			X	X	X	X	X
Persian, S-IV	Single-Lilac (Willow Branches)	X						
Pocahontas, S-VII	Single-Purple		X	X				
President Grevy, D-III	Double-Blue				X	X	X	X
President Lincoln, S-II	Single-Blue			X	X	X	X	X
Primrose, S-I	Single-Yellowish			X	X	X	X	X
Sensation, S-VII	Single-Purple With White Edge	X	X					
Victor Lemoine, D-VI	Double-Lilac			X	X	X	X	X

Common or Old Fashion Lilac, unpredictable size and color but always with pretty, old time lilac aroma. Available at All Prices from \$0.70 for 1 yr. seedlings to \$35

All Named Lilacs are on their own roots and were propagated either by tissue culture or cuttings.

All Common Lilacs are started from seed in an outside seedbed, some from U.S. seed, some from French seed.

THIS AVAILABILITY CHART IS VALID UNTIL APRIL 1991

Subject to being sold out or other unforeseen circumstances

Board of Directors 1989-1990

Term Expires 1991:

Reva Ballreich . . . Beverly Hills, CA	Robert Hoepfl Rochester, NY
Daniel Cohen . . . Greensboro, VT	William Horman Detroit, MI
Walter Eickhorst . . . Naperville, IL	William Utley Clyde, NY
Robert Gilbert . . . Hyde Park, NY	Roger Vick Edmonton, Alta.

Term Expires 1992:

Nancy Emerson Delhi, NY	Walter Oakes Rumford, ME
Pauline Fiala Spencer, OH	Francesco Tortorici
William Heard Johnston, IA Montreal, Que.

Term Expires 1993:

Peter Ely Seymour, CT	Winfried Martin Mentor, OH
Dr. Joel Margaretten	Daniel Ryniec Brooklyn, NY
. Leona Valley, CA	Orville Steward . . . Plymouth, VT

Historian's Report

This report is actually an earnest plea for written or printed material and photographs about the Society and its members and activities over the past twenty years. Also reminiscences of "older" members are particularly welcome. Dry as dust facts are already available to your historian. What he really needs is brief accounts of notable events or memorable happenings, unexpected or unplanned, which would be interesting to ILS members.

For example, the first convention at Highland Park, Rochester, NY, was planned to coincide with peak bloom. That spring was exceptionally cool, consequently only Havemeyer's 'Hallelujah' was in bloom. Frantic calls to Swarthmore, PA, and Medina, OH, produced armfuls of gorgeous blooms which were displayed in the hotel lobby to the delight of "delegates" and the hotel guests. Several other interesting anecdotes could be told about that historic meeting. So, old-timers, scratch your brains — newer members, too — let your historian hear from you and share your experiences for the good of all and posterity.

*Respectfully submitted,
/s/ Robert B. Clark*

INTERNATIONAL LILAC SOCIETY

STANDING COMMITTEES

I. ADMINISTRATIVE

EXECUTIVE
President . . . Daniel K. Ryniec
Executive VP . . . William A. Utley
Membership
Sec'y Walter Oakes
Recording Sec'y . . . Mary P. Cohen
Treasurer Walter E. Eickhorst
Editor Robert B. Clark

BUDGET AND FISCAL
Walter E. Eickhorst, Chm.
Walter W. Oakes
Trevor Cole

GIFTS AND ENDOWMENTS
Robert B. Clark, Chm.
Peter Ely

REGIONAL VICE PRESIDENTS

1. New England . . . Daniel Cohen	7. California . . . Reva Ballreich
2. Atlantic John Carvill	8. Great Basin . . . Merle Moore
3. South Robert Forsythe	9. Southwest
4. Central Charles Lamprecht	10. Canada East . . . F. Tortorici
5. Plains Max Peterson	11. Canada West . . . Roger Vick
6. Northwest . . . Reva Ballreich	12. Europe . . . Charles Holetich

AUDIT: Don Wedge, Ch. W. Stampe Dr. Owen M. Rogers

II. CONVENTION

CONVENTION
William A. Utley, Chm.
Dr. Louis C. Erickson
Robert Gilbert

CREDENTIALS
Walter W. Oakes, Chm.
W.H. Martin, Co-Chm.
Ellen Steward
Charles Holetich

AUCTION
John Carvill, Chairman
Marie Chaykowski
Dan Cohen
Walter Eickhorst
Elsie Meile

Pauline Fiala
Max Peterson
Col. Hanssen Schenker

III. EDUCATIONAL

EDUCATION
Dr. Owen M. Rogers, Chairman
Dr. Craig Hibben Dr. Louis Erickson
John H. Alexander III Trevor Cole
Dr. Ed Hasselkus W. Stampe

RESEARCH
Dr. C. Hibben, Chairman
Dr. Ed Hasselkus
Dr. Louis Erickson

PUBLICATIONS
Dr. Owen M. Rogers, Chairman
Robert B. Clark
Charles D. Holetich

IV. HONORS, HISTORY, LEGAL

HONORS AWARDS
R. B. Clark, Chairman
Pauline Fiala
Dr. Joel Margaretten

LEGAL
William A. Utley, Chm.

ARCHIVES
Lois Utley, Chairman
Mabel Harkness
Orville Steward

V. LILACS

REGISTRATION
Freek Vrugtman, Registrar

LILAC EVALUATION
Charles D. Holetich, Chairman
Robert Hoepfl Walter W. Oakes

DISTRIBUTION
William A. Utley, Chm.
Charles Davis
Robert Hoepfl
Dr. Joel Margaretten
William Heard

SEED EXCHANGE
William Heard, Chairman
Fr. John L. Fiala
Charles Holetich
Max Peterson
Don Wedge

VI. MEMBERSHIP

MEMBERSHIP
Winfried Martin, Chm.
Walter W. Oakes
William Horman

NOMINATIONS
Robert B. Clark, Chm.
Robert S. Gilbert
Peter Ely

ELECTIONS
Pauline L. Fiala, Chm.
Mollie Pesata
Sally Schenker
W. H. Martin
Plus Regional VPs

PUBLICITY AND PUBLIC RELATIONS
Dr. Joel Margaretten, Chm.
Reva Ballreich
Sabra Gilbert



Hokkaido University Botanic Garden

