

LILACS

VOLUME 22, NUMBER 2

SPRING 1993



The 'Rochester' Lilac

QUARTERLY JOURNAL

of the International Lilac Society

*IN THIS
ISSUE:* **Convention Program**

A Publication of
THE INTERNATIONAL LILAC SOCIETY
Copyright 1993 Editor

*Copies of this publication are available by writing to the International Lilac Society,
 c/o Mrs. Pauline Fiala, 6995 Congress Road, Spencer, Ohio 44275. \$5.00 (U.S.)*

International Lilac Society

President	<i>Reva Ballreich</i> P.O. Box 1804 Idyllwood, CA 92549
Executive Vice President	<i>William A. Utley</i> Grape Hill Gardens, 1232 Devereaux Rd., Clyde, NY 14433
Membership Secretary	<i>David Gressley</i> 8907 Kirtland-Chardon Rd., Mentor, OH 44060
Treasurer	<i>Walter E. Eickhorst</i> 8 S 243 College Road, Naperville, IL 60540
Assistant Treasurer	<i>Robert Gilbert*</i> P.O. Box 83, Hyde Park, NY 12538
Editor	<i>Robert B. Clark</i> RD 1, 5 Clark Drive, Meredith, NH 03253 (Apr.-Nov.) 27 Lake Wood Cir., Meadow Wood Farms, Ocala, Fla. 34482 (Dec.-Mar.)

Membership Classification (U.S. Funds)

Single or Family / Annual	\$ 15.00
Sustaining	30.00
Institution/Commercial	35.00
Life	150.00

**Mail membership dues to Asst. Treasurer Robert Gilbert*

INTERNATIONAL LILAC SOCIETY is a non-profit corporation comprised of individuals who share a particular interest, appreciation and fondness for lilacs. Through exchange of knowledge, experience and facts gained by members it is helping to promote, educate and broaden public understanding and awareness.

Published March, 1993

The 'Rochester' Lilac

By Alvan R. Grant, Rochester, New York

I entered into employment as Plant Propagator with the Rochester Park Bureau in November, 1945, after approximately four years of service in the army during World War II. I was fortunate in that the late Richard Horsey (died during the mid-1960s) was still with the park system and that he spent many hours with me traipsing through Highland and Durand Eastman parks making me acquainted with the various plant collections, and, at the same time, providing me with much of the history of the park system and its plant collections.

As part of the plant propagation program during 1946, I gathered seed from several of the choice lilacs – one of them was 'Edith Cavell'. The various seed lots were kept separate and labeled. I then sowed the seeds in flats in the greenhouse and received good germination. The seedlings were potted and grown in the greenhouse until 1949 when many were selected for lining out in the nursery which we were planting on land leased from St. John's Home just west of Highland Park. These seedling were kept under close observation by me and by Bernard Harkness who had succeeded Richard Horsey as Taxonomist in 1950. Dick Fenicchia rejoined the park system in 1950. I had received several promotions within the system as a result of Civil Service exams and Dick became the propagator and joined with Bernie and me in keeping close observation over these seedlings.

Perhaps the first sign of something different appearing among these seedlings was in the foliage of one of them – it appeared to be more leatherly. Then when it bloomed for the first time in 1953 the difference in flower characteristics began to show. This plant was one of my seedlings but it was carefully nurtured by Dick Fenicchia during the years that followed. Finally, in 1963, after it had acquired sufficient growth and had held the characteristics for a period of several years, I named this seedling 'Rochester' in honor of the city which had named the lilac its official flower in 1948. As you know, Dick Fenicchia has had great success in using 'Rochester' as a parent plant in a program of hybridization and has produced a whole family of 'Rochester' lilacs.

International Lilac Society Convention

May 13-15, 1993

Cavanaugh's Fourth Avenue, Spokane, Washington

(Spokane Lilac Society – Hosts)

"A Lilac Spree in '93"

THURSDAY, MAY 13, 1993

- 2:00-5:00 p.m. BOARD OF DIRECTORS MEETING
1:00-8:00 p.m. Lilac Flower Show and Nursery Displays
Cavanaugh's Fourth Avenue
5:30 p.m. BOARD OF DIRECTORS
meet in Lobby to depart for Dinner at Sheraton Hotel
5:00-8:00 p.m. REGISTRATION and SALES TABLE
Cavanaugh's Fourth Avenue
Dinner on your own in local area except for Board of Directors
7:00 p.m. Board of Directors meeting continued following dinner
8:00-10:00 p.m. Hospitality Suite available

FRIDAY, MAY 14, 1993

- 6:30-8:00 a.m. Complimentary Continental Breakfast, Cavanaugh's
8:00-9:00 a.m. REGISTRATION and SALES TABLE
8:00 a.m. Lilac Flower Show and Nursery Displays open
9:00 a.m. Welcome
Spokane Lilac Society President Bobbee Eddy
Spokane Mayor Sheri Barnard
International Lilac Society President Reva Ballreich
Guest Speaker's Panel on "Lilacs"
"How to Create a World Class Lilac Collection,"
by William Utley, Grape Hill Gardens, Clyde, NY
"Propagation by Pollination of Lilacs,"
by Joel Margaretten, Margaretten Park, Leona Valley, CA
11:00 a.m. ANNUAL MEETING
conducted by President Reva Ballreich
12:15 p.m. Buses depart for Arbor Crest Winery
12:30 p.m. Wine Tasting and Lunch
History of Arbor Crest Estate, a National Historic Site
1:30 p.m. Buses depart for John Finch Arboretum
2:00 p.m. Welcome to Arboretum by Pam Flibbert, Caretaker
"Renovation of Lilac Lane"

-
-
- 3:30 p.m. . Buses depart Arboretum for Cavanaugh's Fourth Avenue
Brown's Addition Route with Coeur D'Alene Park Lilacs
on return trip.
- 5:00 p.m. LILAC FLOWER SHOW CLOSES
- 6:30 p.m. President's Dinner
- After dinner guest speaker:
Steve McCulloch from Brigg's Nursery, Inc., Olympia, WA
"Tissue Culture Propagation"
- 8:00-10:00 p.m. Hospitality Suite open

SATURDAY, MAY 15, 1993

- 6:30-8:00 a.m. Complimentary Continental Breakfast
or breakfast on your own
- 7:00 a.m. New Director's Meeting and Reorganization
- 8:30 a.m. Lilac Program on "Pruning Lilacs"
by Charles Holetich, Royal Botanical Gardens,
Hamilton, Ontario Canada, with slide presentation
- 9:45 a.m. Buses leave for Lilac City Park Tours (1 hour tour)
- 10:45 a.m. Arrive at River Front Park by Bronze Statues
- 11:00 a.m. U.S. POSTAL SERVICE Dedication Ceremony
and Unveiling of official LILAC STAMP honoring
Spokane Lilac Festival. International Lilac Society President
Reva Ballreich will be one of the speakers during the
30-minute ceremony. River Front Park
- 9-12 noon NURSERY DISPLAYS TO BE REMOVED
- 11:45 a.m. Lunch at "The Olive Garden"
across the street from River Front Park
- 12:45 p.m. Buses leave for Manito Park Lilac Garden
- 1:00 p.m. Welcome by John Dodson, Horticulture Supervisor
"History of Manito Park's Lilac Garden"
- 2:00 p.m. LILAC AUCTION, Manito Park Garden Center
- 3:30 p.m. One bus will depart for Cavanaugh's Fourth Avenue
- 4:00 p.m. One bus will depart for Cavanaugh's Fourth Avenue
- 5:30 p.m. Buses leave for Cavanaugh's Inn at The Park
- 6:00 p.m. Awards Banquet
- 8:00 p.m. Spokane Lilac Festival Torchlight Parade
President Reva Ballreich will be part of the parade
- 10:00 p.m. ... Hospitality Suite opens at Cavanaugh's Fourth Avenue

Lilacs for Spokane Auction, 1993

- | | |
|--------------------------------|-------------------------------|
| Ami Schott, KO | Michel Buchner, BM |
| Blue Hyacinth (EH), KO | 10 Miss Canada (PR), BN |
| Carley, KO | 10 Monique Lemoine, BN |
| Charles Joly, BM | My Favorite, HK, KO |
| Churchill (EH), KO | Olivia (PR), KO |
| Crystal, HK | Olivier de Serres, KO |
| 10 deBelderii (-orum), HA | Orchid Chiffon (EH), KO |
| Etna, KO | Ostrander, KO |
| Excel (EH), KO | x persica, KO |
| Firmament, KO | 10 patula (syn. velutina), HA |
| Frank Klager, HK | Pink Cloud, HK |
| Fred L. Klager, KO | Pink Lace, KO |
| Glory, KO | Prince of Wales, KO |
| Jessica (PR), KO | Purple Glory (EH), KO |
| Lamartine (EH), KO | Sarah Sands, KO |
| Lavender Lady, KO | Silvia (PR), KO |
| Leonid Leonov, KO | Sister Justena (EH), KO |
| Ludwig Spaeth, Andanken an, BM | Telimena (PR), KO |
| 10 Minuet (PR), BN | velutina, <i>see patula</i> |

Key to Donors

BH – Bill Horman / BM – Betty Mills / BN – Bailey Nursery / HA – Holden Arboretum
 HK – Hulda Klager / KO – Katie Osborne / RB – Reva Ballreich

Lilacs for Auction Supplied by Reva Ballreich

- | | |
|---|---|
| S VII Andenken an
Ludwig Spath Spath | S III Mrs. August Belmont Havemeyer |
| S VI Andre Csizik Maarse | S VI Mrs. Watson Webb Havemeyer |
| D I Banquise Lemoine | D III Nadezhda Kolesnikov |
| D VII Charles Joly Lemoine | S VII Negro Lemoine |
| S III Crepuscule Lemoine | D V-II Olive Mae Cummings Berdeen |
| S III Dawn Havemeyer | D VII Paul Thirion Lemoine |
| D I Edith Cavell Lemoine | S VI Pink Cloud Clarke |
| S VII Edmond Boissier Lemoine | S V Pink Mist Havemeyer |
| S VII Ethiopia Brand | S IV-V-VII Pioner Kolesnikov |
| D VI Evangeline Skinner | S IV-III Pol Robson Kolesnikov |
| S III Firmament Lemoine | S VI Pom Pom Robinson |
| S I Flora Maarse | S III President Lincoln Dunbar |
| S III-IV Gastello Kolesnikov | S I Princess Alexandra Dougal |
| S V General Sherman Dunbar | S VI Priscilla Havemeyer |
| D I Gertrude Leslie Skinner | D LV Rustica Lemoine |
| S IV Gilbert Lemoine | S I Sacrament Fiala |
| S VII Hiram H. Edgerton Dunbar | S IV-V Sholokov Kolesnikov |
| S IV Indiya Kolesnikov | S I Sister Justena Skinner |
| D V Katherine Havemeyer Lemoine | S IV Sprok Let Komsomola Kolesnikov |
| D VII Klager's Double Blue Klager | D VI Sunset Clarke |
| D IV Leon Gambetta Lemoine | S VI Susan B. Anthony Dunbar |
| S V Macrostachya Lafievre | S VII Vesper Fleming |
| S V Marie Frances Fiala | S III Wedgwood Blue Fiala |
| D IV Michel Buchner Lemoine | S I White Swan Havemeyer |
| D I Miss Ellen Willmott Lemoine | S III Wonder Blue Fiala |
| D I Mme. Casimir Perier Lemoine | S III Woodland Blue Hancock |
| D V Montaigne Lemoine | D V W.T. Lee Schloen |
| S I Monument Lemoine | S VII-VII Znanya Lenina Kolesnikov |

A Lilac Spree in '93

By MarvaLee Peterschick, Convention Chairwoman

THE dictionary describes the word "spree" as a lively frolic. Such is the theme for the 22nd Annual International Lilac Society convention being hosted by Spokane Lilac Society, with a membership of 25-30 members, Spokane, Washington, May 13-15, 1993. A fun time will be had by all with lilacs evident throughout the lilac city (hopefully if old man winter departs very soon).

Visitors in Spokane for the convention will also be able to partake in the 1993 Lilac Festival activities with the theme "For The Kid in Us." International Lilac Society President Reva Ballreich will be part of the torchlight parade on Saturday night, May 15.

When convention visitors arrive at Cavanaugh's Fourth Avenue Hotel in Spokane, they will find a lilac spring flower show "The Garden Bench" staged at the hotel for their viewing. Design classes for flower arrangements have been named after poem titles in the *The Garden Bench and Other Poems* by Fr. John L. Fiala. The flower show is sponsored by Washington State Federation of Garden Clubs, Inland Empire District and the Associated Garden Clubs of Spokane. Nursery displays of lilacs will also be available.

Opening ceremonies on Friday morning, May 14, will give Northwest members of International Lilac Society who have never had the opportunity to attend this convention access to experts on a panel talking about lilacs in their specialized field. The panel includes Mr. William Utley, Dr. Joel Margaretten, and Reva Ballreich. Time for a question and answer session will be allowed.

*In Mr. William Utley's
(Executive Vice President in
charge of conventions for
International Lilac Society)
own words, "it will be
different." (Stated at the 21st
convention in Lexington.)*

After the annual business meeting is conducted by President Reva Ballreich, we will depart for Arbor Crest Estate, a National Historic site where fun and relaxation with fellow lilac lovers has been planned which includes wine-tasting and lunch. A breathtaking view from this location of the entire Spokane valley will leave you with wonderful memories.

At the Finch Arboretum, visitors will tour the lilacs that have been moved recently from Lilac Lane to individual beds in a new open air design. This was accomplished with astounding results and very little loss.

The President's Dinner on Friday evening will feature Steve McCullough, Briggs Nursery, Olympia, Washington on "Tissue Culture Lilacs."

On Saturday morning, seven parks within the Spokane City Parks

system that have mass lilac plantings will be observed. Pam Flibbert, caretaker of the lilacs at Finch Arboretum, will be conducting the tour. Pam also prunes and cares for lilacs in many of the city parks.

Visitors will also tour Spokane's most impressive display of lilacs in the 2-acre Manito Lilac Garden. It has recently been reinventoried and labeled. About half of the mature lilacs you see here were brought from the East Coast and Holland for the garden's installation in 1915.

*In Convention
Chairperson Mrs.
Peterschick's own
words, "It will be fun
and exciting."*

Plantings have continued, and within the last few years, 15 more varieties have been added along with two new redwood benches, one on each end of the garden. The local garden clubs and Spokane Lilac Society have coordinated their monetary support with John Dodson, Horticulture Supervisor at Manito Park who will give a complete history of the Manito Lilac Garden. Other areas of Manito Park that have beautiful lilacs growing include the Japanese Garden that will be visited.

Following our lunch on Saturday, we will have the rare opportunity to hear Mr. Charles Holetich, from Royal Botanical Gardens, Hamilton, Ontario. He is in charge of the arboretum development and maintenance, including the Katie Osborne Lilac Collection, containing 883 lilacs. His program will be on "Pruning" accompanied with a slide collection. Mr. Holetich was very gracious in providing 75 rare lilacs for the lilac auction.

The lilac auction has over 200 lilacs committed. Besides Mr. Holetich's donation, Reva Ballreich is supplying over 50. Bailey's Nursery sent 30, Holden Arboretum, 20; Joel Margaretten, 13; Hulda Klager Gardens, 4; Spokane Lilac Society and local nurseries, 20.

Although the lilac collections in Spokane are small in comparison to plantings in the East and Midwest, visitors will find lilac time in Spokane heady with the sweet perfume and pastel colors of lilacs. With the convention coinciding with the Lilac Festival, it gives visitors the opportunity to attend some of their festivities also. After the Awards Banquet on Saturday night, the lilac festival parade begins at 8:00 p.m. and lasts till 10:00 p.m. to put the final fun event on "Lilac Spree in '93."

For information, contact:

MarvaLee Peterschick, convention chairwoman,
S 37307 Old SR 195
Rosalia, WA 99170. Telephone (509) 523-4063.

Reservations deadline is April 12, 1993. For last minute registration, call Donna at Manito Park (509) 456-4331. For last minute reservations, call

1-800-THE-INNS, Cavanaugh's Fourth Avenue Hotel, E 110 Fourth Avenue, Spokane, WA 99202. Hotel space will be extremely tight due to Spokane Lilac Festival.

If any visitors are planning to visit Hulda Klager Lilac Gardens at Woodland, Washington, remember, their lilacs would be about a week ahead of lilacs in the Spokane area. Visitors might want to visit them before the convention. They are located about 2-1/2 hours' drive south of Seattle at Woodland, Washington.

LILACDOM NEWS

Philatelists Listen Up

The U.S. Postal Service has recently announced its intention to honor the Spokane Lilac Festival "Lilac Spree for '93" by issuing a lilac stamp, according to Dan Ruddell, festival director. The International Lilac Society will be represented by President Reva Ballreich of Idyllwild, California, in ceremonies at Riverfront Park in downtown Seattle at 11 o'clock, Saturday, May 15.

Stamp collectors are hereby alerted. Doubtless they are familiar with ordering procedures. ILS welcomes international exposure. Executive vice presidents and members at large should be prepared to tell the lilac story to lilac enthusiasts worldwide.



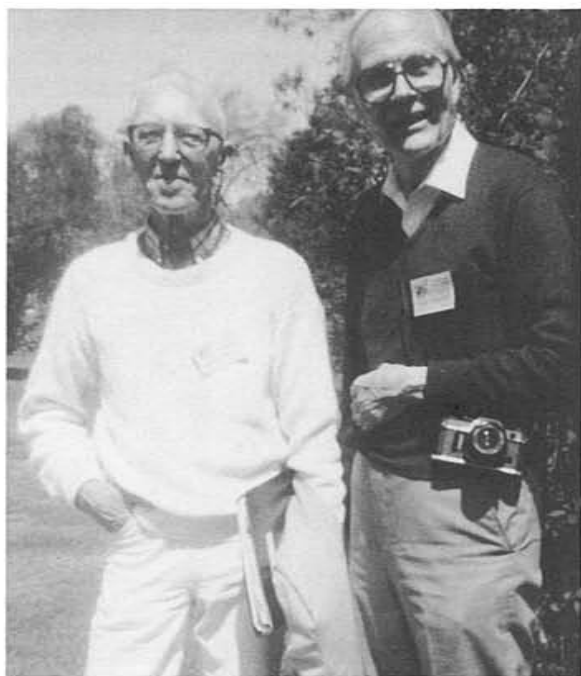
Orville Steward and Nancy Emerson at Montreal

Manito Park Lilac Garden

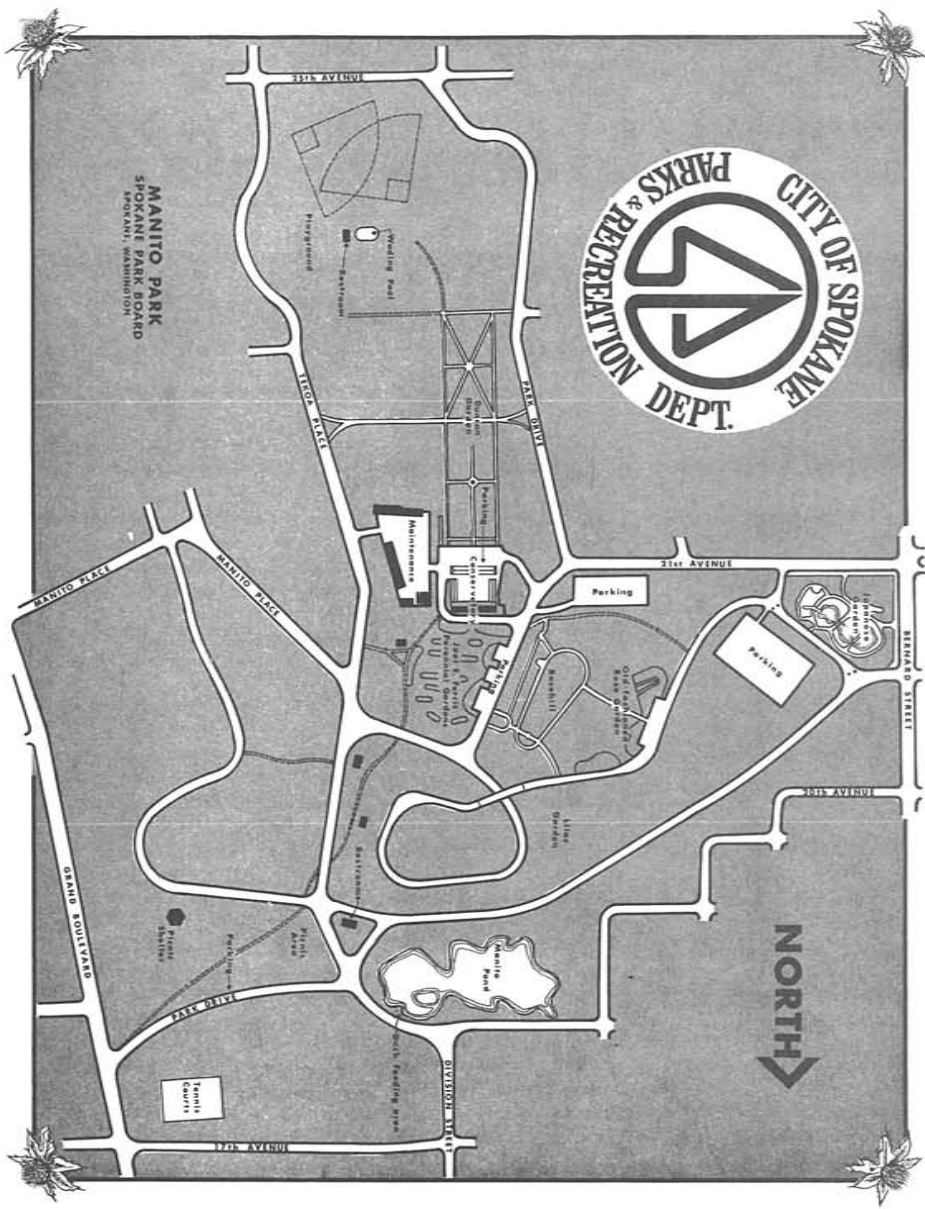
Dr. Maillot
 William Robinson
 Mme. de Miller
 President Loubet
 Othello
 Ville de Troyes
 Abel Carriere
 Marechal Lannes
 President Viger
 Miss Ellen Willmott
 Condorcet
 Etna
 Mme. Lemoine
 Mons. Maxime Cornu
 Bleuatre
 Dr. Masters
 Lilarosa
 L'Oncle Tom
 Congo
 Monge
 Glory
 Hippolyte Maringer
 Katherine Havemeyer

Godron
 Le Printemps
 x nanceiana
 Rutilant
 x hyacinthiflora
 Buffon
 Fuerst Lichtenstein
 S. microphylla
 Desfontaines
 Marleyensis
 Michel Buchner
 Ami Schott
 x hyacinthiflora
 Vauban
 Claude Bernard
 Alphonse LaVallee
 Paul Deschanel
 S. oblata dilitata
 Arthur William Paul
 Mme. Florent Stepmann
 Pascal
 President Lincoln
 S. henryi Lutece

Olivier de Serres
 Mme. Casimir Perier
 Mme. Leon Simon
 Senateur Volland
 Louvois
 Reaumur
 Hugo Koster
 Edith Cavell
 Emile Gentil
 President Poincare
 President Grevy
 Duc De Massa
 Jean Bart
 Rosea Grandiflora
 Marie Legraye
 Maximowicz
 Maurice De Vilmorin
 Paul Hariot
 Marc Micheli
 Geheimrat Singelmann
 Priscilla
 Marie Legraye
 De Saussure
 Mme. Antoine Buchner
 Ludwig Spaeth
 S. josikaea
 Charles X
 Pyramidalis Alba
 Leon Gambetta
 Congo
 Mme. Abel Chatenay
 Paul Hariot
 Gloire de Moulins
 Professor Sargent
 Coerulea Superba
 Charles Joly
 Victor Lemoine
 Redwine
 Jules Ferry
 Versailiensis
 Colmariensis
 S. x chinensis Saugeana
 Lucie Baltet
 Blue Hyacinth
 sweginzowi Albida
 laciniata
 Rubra de Marly
 Viviland Morel
 Waldeck-Rousseau
 President Carnot



Walter Oakes, Owen Rogers at Montreal



MANITO PARK
SPOKANE PARK BOARD
 SPOKANE, WASHINGTON

Lilacs at Finch Arboretum

Syringa species

x chinensis
patula
pekinensis
reticulata
reticulata mandschurica
tomentella
oblata dilatata
josikaea
josiflexa 'Royalty'
josiflexa 'Anna Amhoff'

Syringa x *hyacinthiflora*

Buffon
Churchill
Clarke's Giant
Esther Staley
Excel

Syringa x *Prestoniae*

Alexanders Aristocrat
Alexanders Perfection
Alice
Audrey
Charmian
Coral
Esthel M. Webster
Isabella
James Macfarlane
Jessica
Lucetta
Olivia
Redwine
Regan
Ursula

Syringa *Vulgaris*

Alphonse Lavellee
Annabel
Capitaine Baltet
Capitaine Perrault
Charles Joly
Congo
Edith Cavell
Edmond Boissier
Firmament
Hallelujah
Henri Martin
Jules Simon
Lucie Baltet
Macrostachya
Marechal Lannes
Mme. Antoine Buchner
Mme. Lemoine
Monge
Montaigne
Monument
Mrs. W. E. Marshall
Olivier de Serres
Pink Mist
President Lincoln
Primrose
Priscilla
Prodige

WELCOME NEW MEMBERS

BARNES, Woody, Manzita Ranch, Julian, CA 92036

BOWIE, Les, RR #1, Westmeath, Ontario, Canada K0J 2L0

DAIGLE, Françoise, CP 682, Riviere-du-Loup, QC Canada G5R 3Z3

A Survey of Contemporary Common Lilac Hybrids

By Robert B. Clark, Meredith, NH and Ocala, FL

This study is an attempt to update the lilac survey which John C. Wister conducted for the American Association of Botanical Gardens and Arboreta in 1953. No comparable comprehensive study has been published since that time.

The present survey differs from the Wister review in two respects: (a) by the number of cooperators (ninety-one in the former versus the judgment of an individual whose observations of lilacs extend over the entire period of the current survey, and (b) in the limited number of *Syringa vulgaris* hybrids involved. Whereas Wister compiled his data from the total number of cultivars named in the century prior to 1950, Fr. Fiala's list, comprising somewhat over sixty percent of modern cultivars, covers mostly those cultivars introduced during the past forty years.

Further, the new list was drawn by Fr. Fiala alone, who entered the following disclaimer: "Do not ask me how I arrived at these choices – bloom effect, hardiness, beauty, color, vigor, form, reliability in flower and fragrances, all have entered into this appraisal." (*Lilacs, the Genus Syringa*, 1988. p.107). Moreover I should like to remind our readers that in both



Dan Ryniec,
Nancy
Emerson,
Mary Ryniec
at Boston

surveys it is assumed that each lilac cultivar was authentic even if its response to disparate growing conditions might have differed, also that the observers' perceptions might have been diverse.

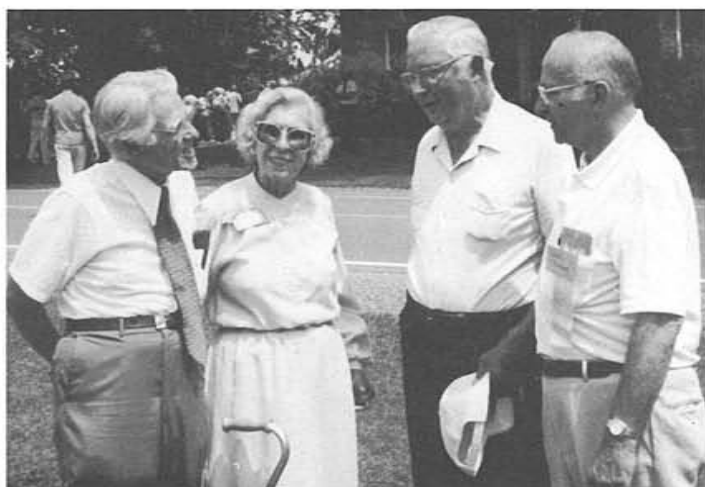
Seventeen lilac breeders or selectors have been at work since 1953, chiefly L.A. Kolesnikov at Moscow, 1938-62; T.A. Havemeyer-Mark Eaton, 1954; R.A. Fenicchia, 1968-83; Fr. J.L. Fiala, 1969-86, and some twelve others who have produced fifty excellent-rated cultivars in a list of eight-two cultivars, oddly enough the same number in the 1953 study.

The new list, arranged alphabetically, has its colors indicated by Roman numerals according to Wister's seven categories (I - white, II - violet, III - blue, IV - lilac, V - pink, VI - reddish, VII - purple). Also indicated are the respective hybridizers and dates of introduction. The collections, both public and private, in which these excellent-rated cultivars are growing are indicated by pairs of capital letters in an appended list. Anyone wishing to visit these collections is admonished to make prior appointment as a courtesy and to assure a warm welcome.

Dozen Bests *Syringa vulgaris* hybrids based on color, by Fr. Fiala, *Lilacs*, pp. 107-8.

- II Agincourt Beauty, Slater ;1968. BW, GH, HB, JB, KO, MH, WN
- II Albert F. Holden, Fiala 1981. AA, BH, BW, FK, GH, JB, HA, OS, WN
- III Ami Schott, Lemoine 1933. AA, BA, BH, BM, CE, GA, GH, HA, HB, JB, KO, MH, OS, UG, WN, WO
- VI Anne Shiach, Havemeyer 1943. AA, BH, CE, EP, GA, HA, HP, KO, MH, MP, WN
- VI Arch McKean, Fiala 1983. FK, OS, WN
- VI Atheline Wilbur, Fiala 1979. BW, FK, GH, HA, KO
- I Avalanche, Fiala 1984. FK, BH, OS
- II Beth Turner, Alexander 1970. BH, GH, KO, MH
- IV Blue Danube, Fiala 1986. FK
- III Blue Delft, Fiala 1981. FK, GA, MH
- I Candeur, Lemoine 1931. CE, SH
- VI Capitaine Baltet, Lemoine 1919. AA, BB, BH, BM, CE, EP, GA, GH, HA, HB, HP, JB, KO, MH, MP, NH, SH, UW, WN
- I Carley, Havemeyer 1953. BB, HP, KO, MH, OS
- V Clyde Lucie, Utley 1975. GH
- V DeCroncels, Baltet 1876. AA, GH, HP, KO, MH, UW
- VII Doctor Brethour, Paterson 1961. KO, MH
- II Dr. Edward Mott Moore, Fenicchia 1972. HP
- II Dr. John Rankin, Fiala 1985. FK
- III Dwight D. Eisenhower, Fenicchia 1968. BB, DL, GH, HA, HP, KO, MH
- VII Edith Braun, Rankin 1968. BW, FK, HA
- I Edith Cavell, Lemoine 1916. AA, BA, BB, BH, BW, CE, EP, GA, HA, HP, JB, KO, MH, MP, SH, UW, WN
- V Edward J. Gardner, Gardner pre-1950. EP, GH, HB, HP, KO, MH, MP, OS, SH, WN
- VI Elsie Lenore, Fiala 1983. FK
- V Emile Lemoine, V. Lemoine 1889. AA, CE, EP, GA, GH, HA, HP, KO, MH, UN
- VII Etna, Lemoine 1927. AA, BH, CE, EP, GA, GH, JB, MH, OS, UW, WN

- I Flora, D.E. Maarse 1953. GH, HP, JB, KO, MH, WO
 VII Flower City, Fenicchia 1983. HP
 VII Frank Paterson, Paterson 1961. BA, BW, CE, HP, JB, KO, MH, UG, WN
 VI Frederick Douglass, Fenicchia 1972. HP, KO
 VI Georges Bellair, Lemoine 1900. AA, BB, BH, CE, EP, GA, HA, HP, JB, KO, MH, MP, WN
 V Holy Maid, Fiala 1984. FK
 I Krasavitsa Moskvy, Kolesnikov 1947. AA, BA, BB, BH, GA, GH, HA, HB, HP, JB, KO, MH, OS, UG, WN
 V Lee Jewett Walker, Berdeen 1979. MH
 IV Le Notre, Lemoine 1922. AA, CE, GH, HP, KO, MH, UW
 II Leonid Leonov, Kolesnikov 1941. KO
 V Lois Ameer Utley, Fiala 1986. FK
 V Lourene Wishart, Fiala 1980. FK
 V Lucie Baltet, Baltet 1888. AA, BA, BB, BH, BM, CE, EP, GH, HA, HB, HP, JB, MH, MP, NH, OS, SH, UW, WN
 IV Lullaby, Fiala 1984. FK
 V Maiden's Blush, Skinner 1966. AA, BB, BH, BM, BW, GH, HA, HB, HP, JB, KO, MH, OS, WO
 V Marechal Foch, Lemoine 1924. AA, BB, BH, BW, CE, EP, GA, GH, HA, HB, HP, JB, KO, MH, MP, SH, WO
 II Marechal Iannes, Lemoine 1910. AA, BW, CE, EP, GA, GH, HA, HB, HP, JB, KO, MH, MP, SH, UW, WN
 V Marie Chaykowski, Fiala 1983. FK
 I Maud Notcutt, Notcutt 1956. AA, BW, CE, GA, HA, SH, UW, WN
 VII M.I. Kalinin, Kolesnikov 1941. KO
 IV Mollie Ann, Fiala 1983. FK
 VII Monge, Lemoine 1913. AA, BA, BH, BW, CE, EP, GA, GH, HA, HB, HP, JB, KO, MH, MP, NH, OS, UG, UW, WN
 I Monument, Lemoine 1934. BB, EP, GA, GH, KO, MH, MP
 I Mother Louise, Fiala 1969. FK
 V Mme Antoine Buchner, Lemoine 1909. AA, BB, BH, BM, CE, EP, GA, GH, HA, HP, JB, MH, MP, NH, OS, SH, UG, WN



*Bill and Lois
 Utley, Father
 Fiala, Orville
 Steward at
 Clyde, NY*

- V Mme. Charles Souchet, Lemoine 1949. AA, BH, BW, CE, GA, KO, UW
 III Mrs. Elizabeth Peterson, Havemeyer 1953. BH, GH, OS
 IV Mrs. John S. Williams, Havemeyer 1953. HA, HP, KO
 VI Mrs. John W. Davis, Havemeyer 1953. N/A
 VI Mrs. Watson Webb, Havemeyer, 1954. AA, BB, BH, GH, KO
 VII Mrs. W.E. Marshall, Havemeyer 1924. AA, BA, BB, CE, EP, GA, GH, HA, HB, HP, JB, KO, MH, MP, SH, UW, WN, WO
 III Olivier de Serres, Lemoine 1909. BA, BB, BW, CE, EP, GA, GH, HA, HB, HP, JB, KO, MH, MP, NH, UW, WN
 III Patrick Pesata, Fiala 1981. FK, GA
 VI Paul Deschanel, Lemoine 1924. AA, CE, EP, GA, HA, HP, KO, MH, MP, SH, UW
 II Pauline Fiala, Fiala 1983. FK
 VI Paul Thirion, Lemoine 1915. AA, BB, BH, BM, BW, CE, EP, GA, GH, HA, HP, KO, MH, MP, NH, SH, UG, UW, WN, WO
 III Porcelain Blue, Fiala 1981. FK
 III P.P. Konchalovski, Kolesnikov 1956. GH, KO, MH
 VII Prodiges. Lemoine 1928. AA, CE, EP, GH, HA, JB, KO, MH, MP, UW
 I Professor R.B. Clark, Fiala 1982. BW, FK, GH
 I Rochester, Grant 1971. BB, BH, GH, HA, HB, HP, KO, MH, SH
 V Romance, Havemeyer 1954. AA, BB, BH, BM, HP, KO, MH, OS, WN, WO
 V R.W. Mills, Klager 1930. AA, MH
 I Saint Joan, Blacklock 1953. CE, GA, GH, KO, MH
 VII Sarah Sands, Havemeyer 1943. AA, BB, BH, EP, GA, GH, HA, HP, KO, MH, MP, NH, SH, UW, WN
 III Saturnale, Lemoine 1916. BH, CE, EP, GA, HB, HP, KO, MH, MP, OS



Ruth Sipp and Bob Clark at Montreal

- III Sea Storm, Fiala 1984. FK
- VII Sensation, D.E. Marse 1938. AA, BA, BB, BH, CA, GH, HA, HB, HP, JB, KO, MH, OS, UG, WN, WO
- V Sesquicentennial, Fenicchia 1972. GH, HP
- IV Silver King, Lemke 1953. AA, BB, BH, BW, GH, HA, HP, KO, MH, UW, WN, WO
- I Slater's Elegance, Slater 1974. GH, HB, JB, KO, MH, WN
- I Souvenir d'Alice Harding, Lemoine 1938. BW, EP, GA, KO, MH, MP, SH
- I Sovietskaya Arktika, Kolesnikov n.d. AA, CA, GH, HA, HP, KO, MH
- III Sumierki, Kolesnikov 1954. AA, HP, KO, MH
- III True Blue, Havemeyer 1953. AA, HP, WN
- V Utro Moskvyy, Kolesnikov 1938. KO, MH
- IV Victor Lemoine, E. Lemoine 1906. AA, BA, BB, BH, CE, EP, GA, GH, HA, HB, HP, KO, MH, MP, SH, UW, WN, WO
- II Violetta, Lemoine 1916. AA, BA, BH, BW, EP, GA, GH, HA, HP, KO, MH, MP, UW, WO
- III Wedgewood Blue, Fiala 1981. BH, BW, FK, HA, HB, MH, OS, WN
- VI Znamyia Lenina, Kolesnikov 1962. AA, GH, HA, HP, KO, MH
- II Zulu, Havemeyer 1954. AA, BB, BH, CA, GH, HA, HP, KO, MH, WO

Prominent Lilac Collections of North America, 1993

- AA Arnold Arboretum, Jamaica Plain, MA. Lilacs Q.J. 21(4):105-106. 1992
- BA Bickelhaupt Arboretum, Clinton, IA
- BB Brooklyn Botanic Garden, Brooklyn, NY. Ibid 14(1):6-7. 1985
- BH Roger Luce, Hampden, ME
- BM Bernard McLaughlin, South Paris, ME Lilac Newsletter XIV(2):4. 1988
- BW Birchwood, Meredith, NH. Ibid. X(3):9-11. 1984
- CE Central Experimental Farm, Ottawa, Ont. Buckley, Arb. Notes 16. No. 24. 1961
- DL Dooryard Lilacs, Greensboro, VT
- EP Ewing Park, DesMoines, IA Lilacs 10:6-8. 1981
- FK Falconskeape, Medina, OH
- GA Glen of Aherlow, East Burke, VT. Ibid. 13(1):21-24. 1984
- GH Grape Hill Gardens, Clyde, NY. Ibid. 17(1):26-27. 1988
- HA Holden Arboretum, Mentor, OH. Ibid. 9:7-8. 1980; 18(3):73-74. 1989
- HB Hamesbest, Randolph Center, VT. Lilacs Q.J. 21(4):93. 1992
- HP Highland Botanical Park, Rochester, NY. Lilacs 17(1) 19-22. 1988
- JB Jardin de botanic de la Ville de Montreal, Que. Lilacs Q.J. 19(2):28-29. 1990
- KO Katie Osborne Lilac Collection, R.B.G., Hamilton, Ont. Ibid. 22. 1993
- LL Lilacland, Amherst, MA
- MH Meadowlark Hill, Ogallala, NE. Lilacs 16(1):17-26. 1987
- ML Maurice Lockwood, Schoharie, NY
- MP Margaretten Park, Leona Valley, CA. Ibid. 10:6-8. 1981
- NH University of New Hampshire, Durham, NH
- OS Orville M. Steward, Plymouth, VT
- SH Scott Horticultural Foundation, Swarthmore, PA
- UG University of Guelph, Guelph, Ont. Ibid. 15(1):23-24. 1986
- UW University of Wisconsin, Madison, WI. Ibid. 12(1):14-17. 1983
- WN Wedge Nursery, Albert Lee, MN
- WO Walter W. Oakes, Dixfield, ME. Lilac Newsletter X(3):2-4. 1984
Reva Ballreich, Idyllwild, CA
Woody Barnes, Julian, CA

The Katie Osborne Lilac Garden

By Charles D. Holetich, Royal Botanical Gardens

Prior to 1960-61 the Royal Botanical Garden's lilac collection consisted of about one hundred species and varieties and it occupied the site of Highway 403 and the Old Guelph Road. At that time it was moved to its present location and by 1965 had been expanded to 410 plants representing 240 taxa (species and cultivars) and had caught the attention of Colonel Colin Osborne, a Hamilton widower businessman with two daughters. Katie, his late wife, was a member of the Hamilton Horticultural Society, who was a lilac lover. Colonel Osborne underwrote the further development of the lilac collection in 1966 as a memorial to his beloved spouse.

By 1953 the Katie Osborne lilac garden consisted of somewhat over 500 taxa and had attracted sufficient attention such that the Nineteenth International Horticultural Congress designated the Royal Botanical Gardens as the International registrator's authority.

Today the Katie Osborne lilac collection numbers slightly under 800 lilac taxa.

A. B. Lambertson	Aurea	Carmine
A. M. Brand	Azhurnaya	Caroline Foley
Abel Carriere	Azurea Plena	Carolyn Mae
Abundant Bloomer	Banquise	Cases Frilled Pink
Adelaide Dunbar	Belle de Nancy	Cavour
Admiral Farragut	Belorusskie Zori	Champlain
Agincourt Beauty	Bernard H. Slavin	Charlemagne
Alba Grandiflora	Bertha Child	Charles Baltet
Alba Virginalis	Bertha Phair	Charles Joly
Aleksei Mares'ev	Beth Turner	Charles Lindbergh
Alexander Hamilton	Biala Anna	Charles Sargent
Aline Mocqueris	Bicolor	Charles X
Allison Gray	Big Blue	Charlotte Morgan
Alphonse Bouvier	Bleuatre	Charm
Alphonse Lavallee	Blue Delft	Charmant
Ambassadeur	Blue Delight	Chiffon
Amethyst	Blue Ice	Chris
Ami Schott	Blue Jay	Christophe Colomb
Amor	Bogdan Khmel nitskii	City of Gresham
Andenken an Ludwig Spaeth	Bogdan Przyrzykowski	City of Kalama
Andre Csizik	Boule Azuree	City of Longview
Angel White	Boussingault	City of Olympia
Anna Elisabeth Jacquet	Bright Centennial	Clara
Anna Nickles	Burgemeester Loggers	Clara Cochet
Anne Shiach	Burgemeester Voller	Clarence D. van Zandt
Anne Tighe	C. B. Van Nes	Clarkes Double White
Archeveque	Calvin C. Laney	Clyde Heard
Arthur William Paul	Capitaine Baltet	Coerulea Superba
Astra	Capitaine Perrault	Col. Wm. R. Plum
Atheline Wilbur	Carley	Colbert
Aucubaefolia	Carmen	Colmariensis

Comte Adrien de Montebello	Emile Lemoine	Heavenly Blue
Comte de Kerchove	Erzherzog Johann	Helen Palagge
Comte Horace de Choiseul	Ethel Child	Helen Schloen
Condorcet	Ethiopia	Helene Agathe Keesen
Congo	Etna	Henri Martin
Conquete	Etoile de Mai	Henri Robert
Cora Brandt	Excellent	Henry Clay
Cora Lyden	Fale Baltyku	Henry Wadsworth Longfellow
Corinne	Firmament	Henry Ward Beecher
Crampel	Flora 1953	Herman Eilers
Crepuscule	Florence Christine	Hippolyte Maringer
Croix de Brahy	Flower City	Hiram H. Edgerton
Cynthia	Fraicheur	Hosanna
Danton	Frank Klager	Hugo de Vries
Dappled Dawn	Frank Paterson	Hugo Koster
Darlene	Frau Bertha Dammann	Hugo Mayer
Dawn	Frau Wilhelm Pfitzer	Humphrey
De Croncels	Fred L. Klager	Hyperion
De Humboldt	Fred Payne	I.V. Michurin
De Jussieu	Frederick Douglass	Independence
De Miribel	Frederick Law Olmsted	Indiya
De Saussure	Fritz	Izobilie
Decaisne	Fuerst Liechtenstein	J.R. Koning
Descanso Giant	G. J. Bardsee	Jacques Callot
Descanso King	Gaizinkalns	Jake Thomas
Desfontaines	Galina Ulanova	James Berdeen
Deuil D'Emile Galle	Gastello	James Booth
Diannah Abbott	Gaudichaud	James Stuart
Diderot	Geant des Batailles	Jan van Tol
Dillia	Geheimrat Heyder	Jane Day
Diplomate	General Drouot	Jaquet
Directeur Dorenbos	General Elwell S. Otis	Jean Bart
Doctor Brethour	General Grant	Jeanne D'Arc
Dorothy Ramsden	General John Pershing	Jeffrey
Downfield	General Kitchener	Jessie Gardner
Doyen Keteleer	General Pershing	Jimmy Howarth
Dr. Lindley	General Sheridan	Joan Dunbar
Dr. Maillot	General Sherman	Johann Mensing
Dr. Masters	George Landis	John Kennedy
Dr. Nobbe	George W. Aldridge	Jonkheer G.P. van Tets
Dr. von Regel	Georges Bellair	Jugendtraum
Duc De Massa	Geraldine Smith	Jules Ferry
Dusk	Gerrie Schoonenberg	Jules Simon
Dwight D. Eisenhower	Gigantea	Julien Gerardin
Dzavakharlal Neru	Gilbert	Justii
Earliest Double White (Clarke)	Gismonda	K.A. Timiryazev
Edith Braun	Gloire d'Aalsmeer	Kapitan Teliga
Edith Cavell	Gloire de la Rochelle	Kapriz
Edith Groneau	Gloire de Lorraine	Kate Bergen
Edmond About	Gloire de Moulins	Kate Harlin
Edmond Boissier	Glory	Katherine Havemeyer
Edouard Andre	Godron	Kievlyanka
Edward J. Gardner	Goliath	Kingsville
Ekenholm	Gortenziya	Koenigin Luise
Eleanor Berdeen	Grace Wyman	Komsomolka
Elena Vekhova	Grand duc Constantin	Konstantin Zaslonov
Ellie-Marie	Guizot	Konstanty Karpow
Emil Liebig	Hallelujah	Kosmos
Emile Gentil	Heather	Krasavitsa Moskvy

Krasnaya Moskva
Kremlevskie Kuranty
L'Oncle Tom
La Mauve
La Tour d'Auvergne
Lady Lindsay
Lady Lucille
Lake Bled
Languis
Laplace
Laura L. Barnes
Lavaliensis
Lavender Lady
Lavoisier
Le Gaulois
Le Notre
Le Printemps
Lebedushka
Lemoinei
Leon Gambetta
Leon Simon
Leone Gardner
Leonid Leonov
Leonie Lambert
Lesostepnaya
Lewis Maddock
Lilarosa
Lillian Lee
Linne
Logo
Long Fellow
Louis Henry
Louise Souchard
Lucelle
Lucie Baltet
Maud Notcutt
M.I. Kalinin
Macrostachya
Madame A.J. Klettenberg
Madame Kreuter
Madeleine Lemaire
Magellan
Marat Kazei
Marc Micheli
Marceau
Marechal de Bassompierre
Marechal Foch
Marechal Lannes
Marengo
Margaret Rice Gould
Margot Grunewald
Marie Finon
Marie Legraye
Marie Marcelin
Marlyensis
Marlyensis Pallida
Marshal Vasilevskii
Marshal Zhukov

Martha
Martha Kounze
Martine
Mary Ann Gardner
Mathieu de Dombasle
Maurice Barres
Maurice de Vilmorin
Mauve Mist
Maximowicz
May Day
Mechta
Michel Buchner
Midwest Gem
Mildred Luetta
Minchanka
Mireille
Miss Ellen Willmott
Mlle. Fernande Viger
Mme. Abel Chatenay
Mme. Amelie Duprat
Mme. Antoine Buchner
Mme. Auguste Gouchault
Mme. Briot
Mme. Casimir Perier
Mme. Catherine Burchet
Mme. Charles Souchet
Mme. de Miller
Mme. F. Morel
Mme. Fallieres
Mme. Felix
Mme. Florent Stepman
Mme. Henri Guillaud
Mme. Jules Finger
Mme. Lemoine
Mme. Leon Simon
Mme. Moser
Mme. R. Foyer
Mollie Ann
Monge
Monique Lemoine
Mons J. de Messemaeker
Mons. Leon Mathieu
Mons. Lepage
Mons. Maxime Cornu
Mont Blanc
Montaigne
Monument
Moonlight
Mrs. Calvin Coolidge
Mrs. Edward Harding
Mrs. Fannie W. Heath
Mrs. H.J. Cran
Mrs. Harry Bickle
Mrs. John S. Williams
Mrs. McKelvey
Mrs. Trapman
Mrs. W.E. Marshall
Mrs. Watson Webb

My Favorite
McMaster Centennial
Nadezhda
Nancy Frick
Naudin
Nebo Moskvy
Negro
Nellie Maria
Nezhnost
Night
Noisettiana Alba
Oakes Double White
Obelisque
Ogni Donbassa
Ogni Moskvy
Old Fashioned
Old Rose
Olive May Cummings
Olivier de Serres
Olympiada Kolesnikova
Ostankino
Ostrander
Othello
P.P. Konchalovskii
Pamiat o.S.M. Kirove
Pamytia A.T. Smolskoi
Paradise
Partizanka
Pasteur
Patrick Henry
Patrick Pesata
Paul Deschanel
Paul Harriot
Paul Thirion
Pavlinka
Pearl White
Pearl
Peerless Pink
Perle von Stuttgart
Perle von Teltow
Philemon
Pierre Joigneaux
Pink Lace
Pink Mist
Pinkie
Pioner
Planchon
Pol Robson
Poltava
Pom Pom
Porcelain Blue
President Carnot
President Fallieres
President Grevy
President John Adams
President Lambeau
President Lebrun
President Lincoln

President Loubet	S.V. Lavrov	Triste Barbaro
President Massart	Saint Joan	Turenne
President Monroe	Saint Margaret	Ukraina
President Poincare	Sarah Sands	Utro Moskvu
President Roosevelt	Saturnale	Valentina Grizodubova
President Viger	Savonarole	Valetteana
Pride of Descanso	Schermerhornii	Van Aerschott
Primrose	Scipion Cochet	Versaliensis
Prince de Beauvau	Senateur Volland	Verschaffeltii
Prince Imperial	Sensation	Vesper
Prince Notger	Serene	Vestale
Prince of Wales	Sholokhov	Victor Lemoine
Princess Alexandra	Sibirica	Ville de Limoges
Princesse Camille de Rohan	Siebold	Ville de Troyes
Princesse Clementine	Silver King	Violet Glory
Prinses Beatrix	Slater's Elegance	Violetta
Prinzessin Klotilde	Snow Shower	Virginia Becker
Priscilla	Sobra	Virginite
Prodige	Sorok Let Komsomola	Vivian Evans
Prof. E. Stoeckhardt	Souvenir d'Alice Harding	Vivian-Morel
Prof. E.H. Wilson	Souvenir de Louis Chasset	Volcan
Prof. Edmund Jankowski	Souvenir de Claudius Graindorge	Voorzitter Dix
Prof. Hoser	Souvenir de Gaspard Callot	Wedgwood Blue
Prof. Josef Brzezinski	Souvenir de Henri Simon	W.K. Mills
Professor Sargent	Souvenir de L. Thibaut	W.T. Lee
Pyramidal	Souvenir de Mme. Edmond Kenis	Waldeck-Rousseau
Pyramidalis Alba	Souvenir de Mme. Louis Gielis	Weddle
Quadricolor	Souvenir de Simone	White Spires
Reaumur	Sovietskaya Arktika	White Surprise
Red Giant	Spectabilis	White Swan
Redbud	Stadtgartner Rothpletz	William C. Barry
Reine Elisabeth	Stanislaw Maniuszko	William Robinson
Reine Marguerite	Stefan Makowiecki	William S. Riley
Rene Jarry-Desloges	Sumerki	Woodland Blue
Renoncule	Sunol	Woodland Violet
Riet Bruidegom	Susan B. Anthony	Yubileinaya
Rochambeau	Sweet Charity	Yunost
Rochester	Sweetheart	Zarya Kommunizma
Roi Albert	Tankist	Zashchitnikam Bresta
Romance	Taras Bulba	Zhemchuzhina
Ronsard	Thomas A. Edison	Znamia Lenina
Rosace	Thomas Jefferson	Zoya Kosmodemyanskaya
Rouge de Trianon	Thunberg	Zukunft
Rubella Plena	Tita	Zulu
Rubra Insignis	Todmorden	cv. (no. 71 - Dr. Lemke)
Ruhm von Horstenstein	Tomboutou	cv. (sport of 'Edmond Boissier')
Rus	Topaz	cv. (sport of 'Sensation')
Ruskaya Krasavitsa	Tournefort	
Ruskaya Pesnya	Toussaint-L'Ouverture	
Rustica	Triomphe de Moulins	

Syringa x Hyacinthiflora Cultivars

(D) = *oblata dilatata* x *S. vulgaris*

(G) = *oblata giraldii* x *S. vulgaris*

Alice Eastwood (G)	Grace (G)	Peggy (G)
Anabel (D)	Hyacinthiflora Plena	Pink Cloud (G)
Assessippi (D)	Jewel (D)	Pink Spray (G)
Berryer (G)	Lamartine (G)	Pocahontas (D)
Blue Hyacinth (G)	Laurentian (D)	Purple Glory (G)
Bountiful (G)	Louvain (D)	Purple Heart (G)
Buffon (G)	Louvois (G)	Rowancroft Pink (G)
Campsie (D)	Maidens' Blush (D)	Royal Purple (D)
Catinat (G)	Mary Short (D)	Scotia (G)
Charles Nordine (D)	Maureen (G)	Sister Justena (D)
Churchill (D)	Max Loebner (G)	Splendor (G)
Claude Bernard (G)	Minnehaha (D)	Summer Skies (G)
Daphne Pink (D)	Mirabeau (G)	Sunset (G)
Doctor Chadwick (D)	Montesquieu (G)	Swarthmore (D)
Esther Staley (G)	Mount Baker (D)	The Bride (D)
Evangeline (D)	Muriel (G)	Tom Taylor (D)
Excel (D)	Necker (G)	Turgot (G)
Fantasy (G)	Nokomis (D)	Vauban (G)
Fellemberg	Norah (G)	Villars (G)
Fraser (D)	Orchid Chiffon	Viscountess Willingdon (G)
Gertrude Leslie (D)	Pascal (G)	White Hyacinth (G)
Grace Mackenzie (D)	Patricia (G)	

Syringa x Prestoniae Cultivars

Agata	Ferna Alexander	Miranda
Alexander's Aristocrat	Francisca	Mrs. J.H. Alexander
Alice Rose Foster	Goplana	Nerissa
Alice	Handel	Nike
Basia	Hecla	Nocturne
Beacon	Helen	Olivia
Calpurnia	Hiawatha	Ophelia
Charmian	Jaga	Portia
Constance	Jagienka	Regan
Danusia	Jessica	Silvia
Dawn	Juliet	Swanee
Donald Wyman	Lavinia	Telimena
Dorcas	Leonore	Titania
Elinor	Lucetta	Ursula
Esterka	Mary K. Houts	Valeria
Ethel M. Webster		

Species and Miscellaneous Hybrids

+ <i>correllata</i>	<i>laciniata</i> x <i>pinnatifolia</i>	<i>patula</i> cv. (Pink Form)
<i>debelderorum</i>	<i>laciniata</i>	<i>pekinensis</i>
<i>emodi</i>	<i>meyeri</i>	<i>pinnatifolia</i>
<i>emodi</i> 'Aurea'	<i>meyeri</i> 'Palibin'	<i>potaninii</i>
<i>emodi</i> 'Variegata'	<i>microphylla</i>	<i>pubescens</i>
<i>fauriei</i>	<i>oblata</i> 'Cheyenne'	<i>reflexa</i>
<i>josikaea</i>	<i>oblata</i> var. <i>alba</i>	<i>reticulata</i> 'Chantilly Lace'
<i>josikaea</i> 'Eximia'	<i>oblata</i> var. <i>dilatata</i>	<i>reticulata</i> 'Ivory Silk'
<i>julianae</i>	<i>oblata</i> var. <i>oblata</i>	<i>reticulata</i> var. <i>amurensis</i>
<i>julianae</i> 'George Eastman'	<i>patula</i>	<i>reticulata</i> var. <i>reticulata</i>
<i>julianae</i> 'Hers Variety'	<i>patula</i> 'Miss Kim'	<i>rhodopea</i>
<i>komarowii</i>	<i>patula</i> 'Excellens'	<i>sweginzowii</i>

sweginzowii 'Park Song'
 sweginzowii 'Superba'
 tigerstedtii
 tomentella
 tomentella 'Rosea'
 villosa
 villosa 'Aurea'
 villosa 'Bretschneideri'
 villosa 'Charles Hepburn'
 villosa 'Onarga'
 villosa 'Rosea'
 vulgaris
 vulgaris var. coerulea
 wolfii
 wolfii cv. (Pink Form)
 wolfii x reflexa 'Hagni'

x chinensis
 x chinensis 'Alba'
 x chinensis 'Le Progres'
 x chinensis 'Metensis'
 x chinensis 'Orchid Beauty'
 x chinensis 'President Hayes'
 x chinensis 'Saugeana'
 x chinensis f. bicolor'
 x diversifolia 'William H. Judd'
 x henryi 'Lutece'
 x henryi 'Summer White'
 x hyacinthiflora
 x josiflexa 'Agnes Smith'
 x josiflexa 'Anna Amhoff'
 x josiflexa 'Bellicent'

x josiflexa 'Elaine'
 x josiflexa 'Enid'
 x josiflexa 'Guinevere'
 x josiflexa 'Jesse Hepler'
 x josiflexa 'Lynette'
 x josiflexa 'Nellie Bean'
 x josiflexa 'Royalty'
 x nanceiana 'Floreale'
 x nanceiana 'Rutilant'
 x persica
 x swegiflexa
 yunnanensis
 yunnanensis 'Alba'
 yunnanensis 'Prophecy'
 yunnanensis var. rosea

Syringa Cultivars of Other Interspecific Hybrids

'Albida' (S. sweginzowii x S. tomentella)
 'Alladin' (S. villosa x S. reflexa x S. josikaea)
 'Dancing Druid'
 (S. yunnanensis x S. tomentella x S. komarowii)
 'Germinal' (S. x henryi x S. tomentella)
 'Hedin' (S. villosa x S. sweginzowii)
 'Hunting Tower' (S. villosa x S. sweginzowii)
 'Josee' ((S. patula x S. microphylla) x S. meyeri)
 'Kim' (S. josikaea x S. ?)

'Minuet' (S. josiflexa 'Redwine' x S. x prestoniae
 'Donald Wyman')
 'Miss Canada' (S. x josiflexa 'Redwine' x S. x
 prestoniae 'Hiawatha')
 'Prairial' (S. henryi x S. tomentella)
 'Skinneri' (S. pubescens x S. patula)

There are 797 Taxa (Species, Varieties, Hybrids and Cultivars) in the Collection



Mr. and Mrs. Robert Gilbert, Bill Heard, Marty Martin at Lombard.

Extending Lilac Bloom Time

By Owen M. Rogers, Durham, NH

LILACS are prized for their beautiful and fragrant flowers. If a planting contains only forms of the common lilac (*Syringa vulgaris*) though, that bloom may only last for a week or so and unseasonable weather may reduce it even further. Date of bloom for a particular location will vary somewhat from year to year but all common lilac cultivars will, more or less, bloom together. If, however, other species and hybrids are added, the bloom season can be extended by as much as eight weeks in a normal year.

Other species also provide considerable variation in plant size and shape, flower color, disease resistance and fall foliage color. *Syringa persica*, at one extreme, is small and delicate, while *S. x josiflexa* 'Agnes Smith' is big and bold. *S. patula* 'Miss Kim' is slow growing and globular, while *S. reticulata* is a tree.

Table 1 contains a sampling of the common lilac cultivars (*S. vulgaris*). The list should not be construed as a recommended list since it is an eclectic group of old "French hybrids" as well as some of the new improved introductions from North America and Europe. Any lilac enthusiast will be able to substitute cultivars that do well for them or that are available in their area. I happen to like these and think they span the range of types that are worth considering.

Table 1 – Common Lilac Cultivars

'Rochester' – single white	'Maiden's Blush' – single pink
'Edith Cavell' – double white	'Mme Antoine Buchner' – double pink
'Agincourt Beauty' – single violet	'Mrs. Watson Webb' – single reddish
'Marechal Lannes' – double violet	'Paul Thirion' – double reddish
'Wedgwood Blue' – single blue	'Sensation' – single purple
'Olivier de Serres' – double blue	'Adelaide Dunbar' – double purple

Table 2 illustrates the range of bloom available from other species and cultivars compared to *Syringa vulgaris*.

Table 2 – Bloom Time Based on the Common Lilac

Earlier Than *S. Vulgaris*:

<i>S. oblata</i> – 10 days	'Laurentian' – single blue
<i>S. x hyacinthiflora</i> – cultivars – 5 days	'Esther Staley' – single pink
'Mount Baker' – single white	'Lewis Maddock' – single pink
'Sister Justena' – single white	'Sunset' – single reddish
'Pocahontas' – single white	'Purple Glory' – single purple
'Nokomis' – single lilac	

Later Than *S. Vulgaris*:

<i>S. microphylla</i> – 5 days	'Agnes Smith' – single white
<i>S. x persica</i> – 5 days	'Isabella' – single lilac
<i>S. julianae</i> – 5 days	'Miss Canada' – single reddish
<i>S. patula</i> – 'Miss Kim' – 10 days	'James Macfarlane' – single pink
<i>S. x prestoniae</i> and	'Nellie Bean' – single purple
<i>S. x josiflexa</i> cultivars – 10-15 days	<i>S. reticulata</i> – 30 days

WEDGEWOOD PARK

Established Fall 1987

A Living Plant Reference Library Featuring and Displaying

Peonies – Some 168 plus plants, three each of 56 varieties

Lilacs – Approximately 160 species and cultivars

New Varieties – Are being added yearly

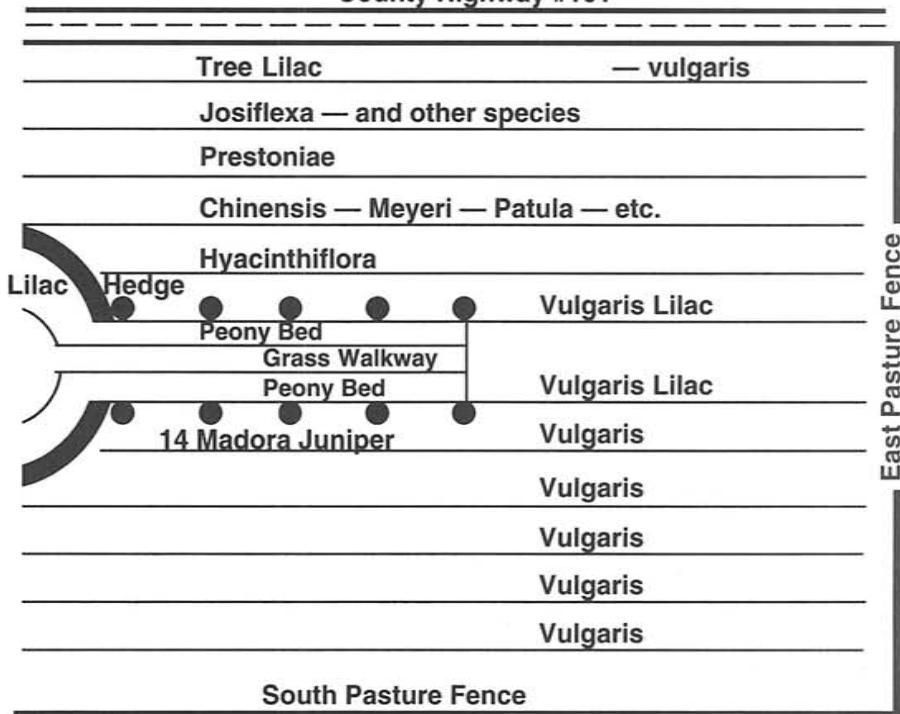
Location – Adjacent to the Vera and Don Wedge residence

RR #2, Box 115, Albert Lea, MN

On County Highway #101 – 1 mile east of Junction I-90 and Hwy 13.

(A historical picnic grounds site for the Albert Lea and Itaska area)

County Highway #101



Report From Estonia

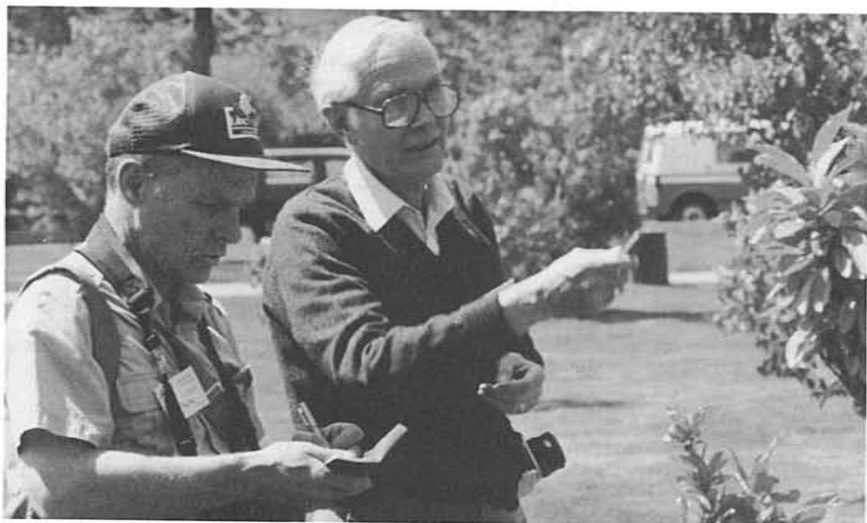
By Mari Laane

The Present and the Future of the Horticulture

The Estonian Union of the Professional Gardeners estimated at the end of 1991 the state of gardening in the once more independent Republic of Estonia to be as follows: fruit and vegetable growing have fallen behind as a result of having been closed in, but they will be able to compete again after a little coaching. Cold-house gardening has no perspective in the Estonian climate. Horticulture as a branch of economy was liquidated in Estonia in 1946. The production of young plants was closed down, the horticultural education was stopped and the firms were nationalized. The EUPG deems the revival of the Estonia horticulture to be its primary aim. To achieve this, the following must be done:

1. To establish the net(work) of private nurseries in Estonia. 2. To introduce interesting plants from the regions with exotic flora of the one-time Soviet Union. 3. To import frost-hardy sorts of decorative plants from the countries of Northern Europe. 4. To organize thorough testing of the imported plants in Estonia.

Ex: Popular gardening journal of the Union of Professional Gardeners of Estonia and Aedvara Ltd.



Peter Ely, Owen Rogers at Montreal.



LETTERS

From New Buffalo, Michigan

To the Editor:

It is with genuine regret that [I will] not see you at the May Convention this spring, for my days of convention have passed. I do not even go out to the mailbox for my mail any more except on nice warm days, and I have a small electric scooter to do that.

I will be with you in spirit as I will be thinking of the many good conventions that I was able to go to with Walter Eickhorst.

It is snowing and blowing very hard here today (Washington's Birthday). My best wishes and thoughts to you all. /s/ Arch McKean

From Eureka, Montana

To the Editor:

Eureka is located just across the Continental Divide in the northwest part of Montana, five miles from the Canadian border. Our "ranch" is located in Tobacco Valley, named for a local plant the Indians used to smoke. The valley floor is at 1,800 feet. The soil is thin and clayey at pH 7.3. Average annual precipitation is fourteen inches. We are under the influence of the Pacific Maritime weather systems of cold wet winters and springs and warm,

dry summers. Hardiness zones between 4 and 5. Today's (February 1) weather has been mild. For the past couple of weeks the highs were in the thirties and lows in the twenties [above]. No fresh snow nor rain. We still have six inches of snow on the ground which is slowly melting.

We have ten assorted lilacs which we received as 1-year-old plants about six inches tall in 1988. We kept them in raised bed for two years, transplanting them into the field on March 28, 1990, when they were 2-3 feet tall. In 1991 they all flowered, but not in 1992, owing to late frost which killed flower buds of fruits and ornamentals, and the new needle flushes on conifers.

Lilac

- x hyacinthiflora 'Esther Staley' - 5-6 ft. upright, no suckers
 - x hyacinthiflora 'Maiden's Blush' - 2-3 ft. open habit, slow growth
 - oblata 'Cheyenne' - 2-3 ft. upright, no basal shoots
 - vulgaris 'Glory' - 3-4 ft. upright, many flower buds
 - vulgaris 'Krasavitsa Moskvyy' - 4-5 ft. upright, stout branches
 - Josikaea - 5-6 ft. open habit, few basal shoots
 - x nanceiana x henryi - 5-6 ft. upright, many interior dead twigs
 - pinetorum - 6-7 ft. upright, many virogous shoots
 - pekinensis - 4-5 ft. upright, stout branches
 - x Prestoniae 'James Macfarlane' - 5-6 ft. upright, very vigorous growth
- /s/ Ellery Steward, Box 503, Zip 59917*



Lombard.

LETTERS

A Tidbit of History on Syringa vulgaris

To the Secretary:

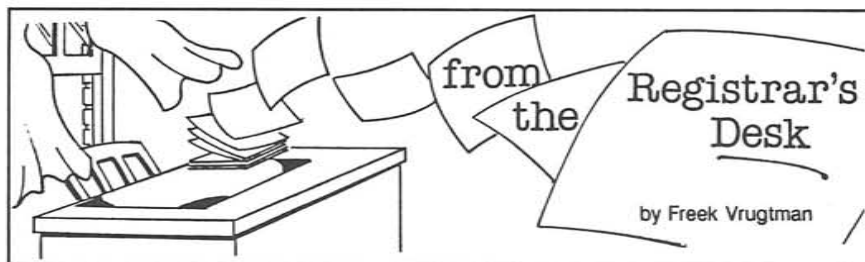
I am sorry for having taken so long, but I wanted to write and thank you for your prompt reply and for sending the Summer 1992 "Quarterly Journal." Not too long after that, I received the Autumn issue. Several weeks ago I sent my 1993 dues to Mr. Gilbert, so I hope things work so I will receive my publications on a timely basis!

I received Father Fiala's book from my husband for Christmas. It is a beautiful publication! I was interested to read that the ancestral home of *Syringa 'vulgaris'* is the Danube River region of Romania and Moldavia. In the early 1800s my ancestors migrated from southern Germany to Moldavia (then known as Bessarabia) and lived in the area of the Kogalnik River (about 70 miles from the Danube) for 75 years. They built beautiful villages and ended up owning lots of land on the steppes of Russia. They had large families, though, and eventually ran out of land and began to lose the special privileges they had received from the Russian government. About 1885, many of them began to migrate to North Dakota. Their descendants are known as German-Russians and make up a good share of the population of North Dakota. Of course, only a small portion of the original settlers migrated, and the rest of those that stayed lost their homes during WW II and either fled back to Germany or ended up in Siberia.

I hope you enjoyed that tidbit of history! Regarding your letter, I totally understand your contentedness in living in Maine. I live 16 miles from the farm my great-great grandfather homesteaded in 1887 and I guess I have no desire to leave ND. If I could choose to live somewhere else for awhile, it would be either the northeast, or Washington state. (I always say I don't like the snow and cold in ND, but apparently I like it more than I think I do!) I have no desire to try Florida, California, or Arizona.

Anyway, we have more snow here in ND this winter than we've had in the past 15 years. That is good as our sloughs and lakes will fill up again. That means I can look forward to planting some more lilacs! My first choice will be a 'Maiden's Blush.'

/s/ Sherry Buerkley, Kulm, ND



Lilacs for America

Report of 1941 Survey Conducted by The Committee on Horticultural Varieties of The American Association of Botanical Gardens and Arboretums

Only recently did I discover that there are two distinct editions of the above publication, namely the one published "April 1942" and the other one "Revised and Corrected July 1943."

Before undertaking a line-by-line comparison of the two publications I wonder whether anyone has done this already and would share the results. Moreover, if anyone happens to have a spare copy of the "Revised and Corrected July 1943" edition and would be willing to part with it for the registrar's files, I would gratefully accept it.

Syringa x josiflexa 'Rubra'

Jack Wister, in his **Lilacs for America** (1953), p.32, lists:

S VI josiflexa rubra (JF) AA, EL.

indicating that this lilac was in cultivation at the time in the collections at the Arnold Arboretum, Jamaica Plain, Massachusetts, and at Elan Memorial Park, Berwick, Pennsylvania. Plants under this name no longer exist at the Arnold Arboretum. What happened to the lilacs at Elan Memorial Park and to Anton I. Malefyt, who was one of John C. Wister's collaborators in the 1942 lilac survey, we do not know. As recently as 1958 the Morton Arboretum obtained scions of *S. x j.* "Rubra" from Elan Park Memorial Corp., but the plant was "... discarded as not determinable on the basis of Wister's description alone – poor specimen too. 10 Dec. 80."

Does anyone have plants of *S. x josiflexa* 'Rubra'?

How does it differ from other known cvs. of *S. x josiflexa*?

Right now *S. x j.* 'Rubra' appears to be a "questionable cultivar" at best. The registrar would appreciate receiving your comments.

INTERNATIONAL LILAC SOCIETY

STANDING COMMITTEES

I. ADMINISTRATIVE

EXECUTIVE

President	Reva Ballreich
Executive Vice President	William A. Utley
Membership Secretary	David Gressley
Recording Secretary	Sally Schenker
Treasurer	Walter E. Eickhorst
Assistant Treasurer	Robert Gilbert
Editor	Robert B. Clark

REGIONAL VICE PRESIDENTS

1. New England	Peter Ely
2. Atlantic	John Carvill
3. South	Robert Forsythe
4. Central	David P. Gressley
5. Plains	Max Peterson
6. Northwest	Mark Clements
7. California	Reva Ballreich
8. Great Basin	Merle Moore
9. Southwest	

EXECUTIVE VICE PRESIDENT For Canada	Charles Holetich
For Europe	Colin Chapman

AUDIT	Dr. Owen M. Rogers
--------------------	--------------------

BOARD OF DIRECTORS

1993

PETER ELY
JOEL MARGARETTEN
MARTY MARTIN
DANIEL RYNIC
ORVILLE STEWARD

1994

WALTER EICKHORST
SARAH SCHENKER
WILLIAM UTLEY
REVA BALLREICH
ROBERT GILBERT

1995

PAULINE FIALA
ROBERT B. CLARK
OWEN M. ROGERS
CHARLES HOLETICH
JACK ALEXANDER III

II. CONVENTION

CONVENTION	William A. Utley, Chairman	AUCTION	John Carvill, Chairman
-------------------------	----------------------------	----------------------	------------------------

III. EDUCATIONAL

EDUCATION	Dr. Owen M. Rogers, Chairman	RESEARCH	Dr. C. Hibben, Chairman
		PUBLICATIONS	Dr. Owen M. Rogers, Chairman

IV. HONORS, HISTORY, LEGAL

HONORS AWARDS	Pauline Fiala, Chairman	ARCHIVES	Daniel Ryniec, Thomas Delendick- Co-Chairmen
----------------------------	-------------------------	-----------------------	---

V. LILACS

REGISTRATION	Freek Vrugtman, Registrar	DISTRIBUTION	William A. Utley, Chairman
		LILAC EVALUATION	Charles D. Holetich, Chairman

VI. MEMBERSHIP

MEMBERSHIP	David Gressley, Chairman	NOMINATIONS	Daniel Ryniec, Chairman
		ELECTIONS	Pauline L. Fiala, Chairman

